

LEARN NEW TECHNIQUES ♥ MODERN MOTIFS & CREATIVE CABLES

Love of Crochet

Fall 2015

Projects, tips & techniques for crochet enthusiasts

24 *Awesome* Autumn Designs

Featuring
**7 Cozy Cowls
& Scarves**

Modern Stripes
**3 Brand New
Chevron Patterns**

PLUS
Beaded Crochet
Learn the Basics
+2 New Projects

loveofcrochet.com



Cuddle Time!
DARLING
STUFFED TOYS
TO MAKE NOW



GALWAY - IRISH COOKING LESSON - CLIFFS OF MOHER - CONNEMARA - CELTIC CRYSTAL FACTORY
CONNEMARA MARBLE CENTER - KYLEMORE ABBEY - DUBLIN - BELFAST - AVOCA WEAVING

10-DAY *Enchanting* IRELAND

Includes the Knitting & Stitching Show in Dublin!



November 6 - 15, 2015



JENNIFER BURT
Editor-in-Chief



AGNES WARREN
Tour Escort

PACKAGE INCLUDES:

Round-trip airfare from New York City, private coach and driver/guide, first-class hotel accommodations, most meals, sightseeing as mentioned in the itinerary, and personally escorted by *Love of Knitting* Editor-in-Chief **JENNIFER BURT** and Craftours escort, **AGNES WARREN!**



**INCLUDES A
KNITTING
WORKSHOP
WITH A LOCAL
INSTRUCTOR**

The entire cost of this 10-day tour is:

\$3878.00

(per person based on double occupancy)

TOLL-FREE TELEPHONE **877-887-1188**

Deanna@Craftours.com

Love of **knitting**



CRAFTOURS.com

PRICING, ITINERARY & ESCORTS ARE SUBJECT TO CHANGE. TRAVEL INSURANCE IS HIGHLY RECOMMENDED FOR THIS TOUR. PLEASE CONSULT OUR WEBSITE FOR TERMS AND CONDITIONS. PRICES ARE BASED ON DOUBLE OCCUPANCY AND SPACE IS AVAILABLE ON A FIRST COME-FIRST SERVED BASIS. GRATUITIES ARE ADDITIONAL AND WILL BE COLLECTED WITH THE FINAL PAYMENT.

WHAT'S HAPPENING?



Back to School Bus

August

School daze

The kids are heading back to school, giving you a chance to treat yourself by learning some new skills of your own. Stop by Craft University to find web seminars, power sessions and courses for knitters, crocheters, weavers, beaders, jewelry makers and sewists all in one place. Celebrate the first day of school with a darling crocheted school bus. Perfect as a gift for your favorite teacher, or your favorite student, the **Back to School Bus** will make them smile when they start the new school year.



Craft University
bit.ly/Craft-University
Back to School Bus
bit.ly/BacktoSchoolBus



Boyfriend Hoodie

September

Cool down!

When September rolls around, we know temperatures will soon be dropping! Luckily, we have several stylish hoodie patterns that are fabulous for transitional weather. Featuring a simple stitch pattern and clever zippered closure, the **Boyfriend Hoodie** is both trendy and modern. This classic sleeveless hoodie comes in his and her styling, making it perfect for everyone in the family.



Boyfriend Hoodie
bit.ly/BoyfriendHoodie



Floral Impressions Wrap

Crazy for Color Coasters

October

Fall colors

As the leaves change to all sorts of magical fall colors, we're focusing on adding color to our crocheting as well! Practice two different ways to bring color into your projects with the **Crazy for Color Coasters and Cozies**, and make three fun projects that will make quick gifts for you or a dear friend. If you don't want to worry about changing yarns, but you still want a colorful project for fall, the yarn featured in the **Floral Impressions Wrap** will handle the color changes for you. Also, if you're already thinking about your holiday knitting, the **Santa and His Helper Elf Mug Cozies** pattern uses simple color changes to create festive designs that will get anyone in the holiday spirit.



Crazy for Color Coasters
bit.ly/CrazyforColorCoasters

Floral Impressions Wrap
bit.ly/FloralImpressions

Santa and His Helper Elf
bit.ly/SantaandHisHelperElf



Santa and His Helper Elf

Copyright ©2015 F+W Media, LLC. All rights reserved. *Love of Crochet* (ISSN 2330-2895), issue 16, is published 4 times a year in Spring, Summer, Fall and Winter by F+W Media, LLC, 741 Corporate Circle, Suite A, Golden CO 80401, USA. Subscription rates for the United States and possessions: \$24.99 for one year (4 issues). Subscribers in Canada, add \$6.00 per year to your subscription cost (includes postage GST), International add \$12.00 per year to your subscription cost. Prepaid payment in US funds only. Major credit cards accepted. Allow 6 weeks for delivery. POSTMASTER: Send address changes to *Love of Crochet*, PO Box 420235, Palm Coast, FL 32142-0235. Return undeliverable Canadian addresses to Bleuchip International, PO Box 26542, London, ON N6C 6B2

Love of Crochet

Fall 2015

Projects, tips & techniques for crochet enthusiasts

Techniques & More

- 16 **Learn to Crochet – Simple Lace Edge Shawlette** *Simple stitches accented with a smart lace edge*
- 28 **Beginner's Guide – Beading 101** *An easy way to add sparkle and glamour*
- 42 **Vintage Inspired – Hexagon Motif Scarf** *Clever motifs create a vintage inspired scarf*
- 50 **Knocking Corner – Fall Swatch-cloth** *Looks like knitting, but this fabric is created using a crochet hook*
- 66 **Make it Quick – Modern Striped Cowl** *Simple stitches form a striking accessory*
- 68 **Stitch Dictionary – Chevron Stitches** *Three new stitch patterns to produce this classic texture*
- 90 **Yarn 101 – Solids & Semisolids** *Learn more about these fabulous hand-painted fibers!*

Stylish Garments

- 18 **Floral Motif Kimono Top** *Comfortable and elegant, the perfect fall sweater*
- 38 **Lacy Shawl Collar Sweater** *An open and airy lace fabric accented with a ribbed cuff and collar*
- 60 **Mosaic Jacket** *Fitted and tailored style meets a modern mosaic pattern*
- 82 **Cabled Crewneck Sweater** *A classic sweater for the guy in your life*

Accessories & Fun Stuff

- 12 **Autumn Leaves Scarf** *Inspired by nature, clever interconnected oak leaves*
- 22 **Five-piece Mitered Shawl** *Master Tunisian crochet miters with this cozy shawl*
- 25 **Beginner Bullion Scarf** *Easy crocheted lace embellished with the brilliant bullion stitch*

- 32 **Lacy Beaded Cowl** *Add flair to the Tunisian lace stitch with stunning beads*
- 34 **Camilla Lace Shawl** *Two colors and two lace patterns make for a terrific shawl*
- 52 **Tri-color Bulky Cowl** *Four fabulous colors create one smashing design*
- 56 **Lace Panel Infinity Scarf** *Striking lace adds an elegant touch to this stylish accessory*
- 64 **Gemstone Tote** *The perfect bag for the fall season*
- 72 **Subtle Chevron Cowl** *Add a little drama with an easy chevron pattern*
- 74 **Beginner Cable Hat and Scarf** *Creative cables add interest and texture*
- 86 **Super Cute Messenger Bag** *Fabric and ribbon enhance the perfect messenger bag*



Home Dec

78 **Stadium Blanket** *Support your team and stay cozy at sporting events this fall*

Kids' projects

44 **Roly Poly Hedgehog** *A super cute and cuddly toy*

47 **Teddy** *The sweetest bear around*

Web Bonus

96 **Feathered Friends Feeder** *This project is for the birds*

In Every Issue

- 4 Editor's Letter
- 6 Trendspotting
- 8 Bookshelf
- 10 Crochet Corner
- 92 Basic Crochet Instructions
- 95 Resources



Editor's Letter



I can't believe that it is already fall!

It seems like just yesterday it was January and I had the entire year before me, and now it's fall and the year is nearly over. Where did the time go?

We have been hard at work on our new look and I am thrilled with our makeover. From the artistic embellishments on every page, to the bright, colorful, and clean look, this issue feels energetic and happy, encouraging me to grab my hook and get to work. I know that you are going to love our changes as much as I do and I welcome hearing your thoughts on our new look.

While our look is fresh and shiny our content remains the same great patterns you love. This issue features a fabulous collection of fun and new designs that we know you will be eager to make.

From trendy, stylish, and classic sweaters to elegant and warm accessories, not to mention a fun toy or two, we have a little something to inspire every crocheter. With so many wonderful patterns to choose from, I am having a hard time deciding what to make first. What about you? Which fun fall design is first in your crocheting queue?

I can't wait to hear what you think of our new look and what you are crocheting from this issue. Drop me a line at mail@loveofcrochet.com and tell me what you think. I am looking forward to hearing from you!

Until next time,

FIND US ON SOCIAL MEDIA

- [facebook.com/loveofcrochet](https://www.facebook.com/loveofcrochet)
- twitter.com/loveofcrochet
- [pinterest.com/loveofcrochet](https://www.pinterest.com/loveofcrochet)
- [instagram.com/loveofcrochet](https://www.instagram.com/loveofcrochet)

Love of Crochet

EDITORIAL

Editor-in-Chief: Jennifer Burt
Associate Editor: Jamie Taylor
Technical Editor: Amy Polcyn

CREATIVE

Art Director: Kit Kinsey
Graphic Designer: Danielle Fay
Photography: Donald Scott, Mellisa Karlin Mahoney
Photo Styling: Tina Gill
Hair & Makeup: Beth Walker

ADVERTISING INQUIRIES
Diane Kocal (317) 482-0120
Sally Finnegan (513) 505-8389



INTERWEAVE

Founder, Creative Director: Linda Ligon
Vice President, Media Sales: Michele Crockett
Creative Director: Larissa Davis
Senior Production Manager: Nancy Pollock
eCommerce Marketing Director: Evelyn Bridge
Director, Magazine Marketing & Fulfillment: Mark Fleetwood



a content + ecommerce company

Chairman & CEO: David Nussbaum
CFO & COO: James Ogle
President: Sara Domville
President: David Blansfield
Chief Digital Officer: Chad Phelps
Senior VP/Operations: Phil Graham
VP/Communications: Stacie Berger

Editorial Offices: *Love of Crochet*, 741 Corporate Circle, Suite A, Golden, CO 80401 or call 303-215-5648; e-mail: info@loveofcrochet.com

To subscribe or to change the address of your current subscription:
Subscriber Services, *Love of Crochet*, P.O. Box 420235, Palm Coast FL 32142-0235

Phone: 866-436-2465, International: 386-597-4387

E-mail: loveofcrochet@emailcustomerservice.com

Entire contents copyright ©2015 by F+W Media, Inc. The contents of this magazine may not be used in any form or reproduced in any media without written consent of the publisher. Projects made with patterns from *Love of Crochet* may not be sold or used for commercial purposes without permission from the project designer.

Important Reader Information: Please send all editorial material, advertising material, photos and correspondence to *Love of Crochet*, 741 Corporate Circle, Suite A, Golden, CO 80401. E-mail: mail@loveofcrochet.com or visit www.loveofcrochet.com.

Submissions: We welcome the submission of designs and photos of projects, but we cannot assume responsibility for material or return it without a self-addressed, stamped envelope. We reserve the right to publish all project photos received by us, in all media.

All letters written to the editor either by mail or e-mail become the property of *Love of Crochet* magazine and are subject to publication. Letters may be edited for space or clarity.

Retailers: If you are interested in carrying this magazine in your store, please contact us:

Toll Free 800.289.0963 Email sales@fwcommunity.com

For Additional Copies, call 1-800-610-1464 or 303-215-5600 and ask for Newsstand Specials, or write to P.O. Box 4101, Golden, CO 80401-0101. Some back orders of this magazine are available. To place an order online, visit www.loveofcrochet.com.

Printed in the USA.



Big Wheel

100% Acrylic

Quick and Fun

Machine
Wash and Dry



Colorful Hugs Prayer Shawl
by Susie Bonell

FREE Pattern B195
www.cascadeyarns.com





Fun fall trends to spice up your crochet projects

Messenger bags

Away from the red carpet, celebrities have recently been spotted carrying functional messenger bags. These utilitarian totes are large enough to fit all of your essentials, and the cross-body style keeps your hands free. However, many of today's styles are as pretty as they are practical! Dress up your favorite messenger bag pattern with appliqués, cute straps, or unique clasps to create a bag you can carry for any occasion.

See our *Super Cute Messenger Bag*, page 86.



bit.ly/BuildYourOwnBag



bit.ly/Felt-and-Flowers-Bag



bit.ly/Aubergine-Coat



bit.ly/Silver-Swing-Jacket

Chunky cowls

Plush, cozy cowls are all over the runway this season, and this easy-to-wear trend transitions perfectly into real-world apparel. These cozy accessories work as outerwear to keep you warm when the weather gets chilly, but many can be worn all day long to accent a plain top or dress. Crochet a design with extra length to wrap it around your neck twice, or make a shorter one so you can quickly throw it on before you dash out for fall fun.

See our *Tri-color Bulky Cowl*, page 52.



bit.ly/One-Hour-Cowl



bit.ly/Woodland-Cowl

Oversized sweaters

With their comfy fit and easy-to-wear style, oversized sweaters are all the rage this fall. Light fabrics that drape beautifully keep these designs from looking bulky, and their loose-fitting shape flatters any figure. Choose a relaxed "boyfriend" style sweater for a laidback look, or crochet a shawl collar sweater for a more sophisticated version.

See our *Lacy Shawl Collar Sweater*, page 38.



ALL PATTERNS ON THIS PAGE AVAILABLE AT CROCHETANDKNITSHOP.COM

FEATHER YOUR NEST WITH THESE LOVABLE CROCHET BIRDS!

EDWARD'S MENAGERIE BIRDS



Over 40 soft toy patterns for crochet birds

Kerry Lord

The eagerly awaited follow-up to the runaway bestseller, *Edward's Menagerie* has arrived with BIRDS! Featuring 40 fine-feathered friends, including a bashful Flamingo, romance-writing Owl and playful Penguin, these unforgettable crochet birds are quick to make using supersoft yarn in playful color palettes. Their larger-than-life personalities will fly off your hook as you crochet them for all your friends and family!

Available from InterweaveStore.com

<http://bit.ly/edwards-menagerie-birds-book>

D&C
David and Charles

ISBN 9781446306024 • \$22.99 US / \$25.50 CAN • 128 PAGES





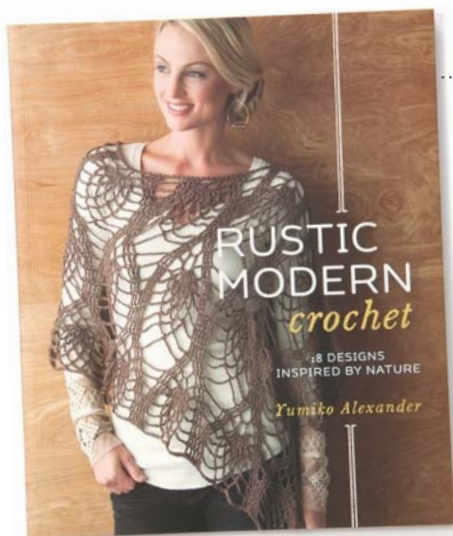
Books to inspire every crocheter!

Crochet Ever After

BY BRENDA K.B. ANDERSON

The magical patterns in this book are inspired by the classic fairy tales we all know and love. Whether you're in the mood to crochet yourself an intricately cabled red hood or a cute cupcake purse or frog hat for the kids, you'll find a variety of charming projects to inspire you. From your favorite heroines to cackling wicked witches, this enchanted book is a fun and crafty way to bring these timeless tales to life.

Interweave, a division of F+W, a Content and eCommerce Company, 2015, 151 pages, \$24.99, bit.ly/Crochet-Ever-After



Rustic Modern Crochet

BY YUMIKO ALEXANDER

These smart designs blend the organic beauty of nature with a cool, contemporary style to create 18 patterns that are effortlessly on-trend. Crochet a brilliantly textured cardigan, starry shawl, or scalloped scarf to bring an earthy appeal to your fall wardrobe. The rustic trend continues to inspire fashion designers and trendsetters across the globe, and these beautiful patterns will help you make it your own.

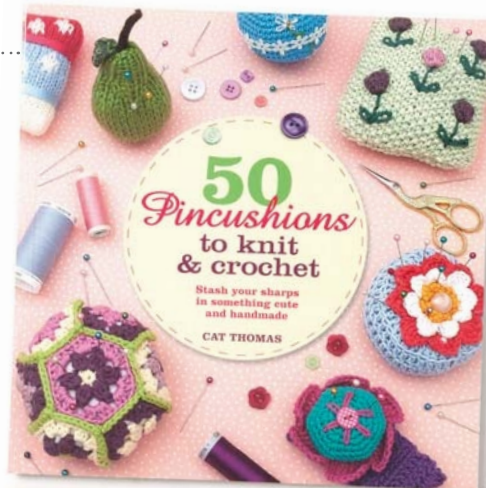
Interweave, a division of F+W, a Content and eCommerce Company, 2014, 112 pages, \$22.99, bit.ly/Rustic-Modern-Crochet

50 Pincushions to Knit & Crochet

BY CAT THOMAS

Keep your pins and needles in place with these inspired cushions for both knitters and crocheters. The adorable designs in this book make fabulously thoughtful gifts, and most can be stitched up in a single sitting. From geometric patterns, to animals, flowers, and even sushi rolls, there is a pincushion here for every crafter.

St. Martin's Griffin, 2014, 128 pages, \$21.99, www.stmartins.com



AN EXCLUSIVE OFFER • JUST FOR YOU

BOOKS
MAGAZINES
KITS
DVDS
PATTERNS
& MORE



SAVE 10%

Off Your Next Purchase
at InterweaveStore.com

No minimum order and no end date

Just use code

KNITPUB10 at checkout

InterweaveStore.com/Knitting

Promo Code Exclusions Apply: Your special discount/coupon code will allow you to take 10% OFF many (not all) of the items you find at InterweaveStore.com/knitting. Your discount/coupon code is not valid for purchasing gift cards, subscriptions, pre-orders, value packs, VIP memberships, or items that ship directly from manufacturers. Discounts cannot be applied to previous purchases. Valid for one use per customer only. Other exclusions may apply.



Fabulous finds and fun products just for you!

Denise in a Della Q Double >

BY DENISE INTERCHANGEABLE KNITTING AND CROCHET

This is the ultimate interchangeable set for the multi-crafter! If you've been thinking about taking up knitting, but you're not about to trade in your crochet hooks, this handy set is just what you need. With needle sizes from 5-19 and hook sizes from F-5 - I-9, you're sure to find the right tools for your next project. Nine cords in varying lengths, as well as 2 extenders and 4 end buttons, are included so there's no limit to the patterns you can create.

Retail price: \$114.95
bit.ly/DeniseDouble



< Shepherdess Lotion

BY LONG ISLAND LIVESTOCK CO.

Made with natural lanolin, this luxurious lotion will soothe and heal your dry skin. The moisturizing formula absorbs quickly, leaving your hands silky smooth for hours. Available in Honey Almond, Petals, or Unscented, this lotion will protect and hydrate your skin as the weather gets cooler, so your nourished and crafty hands can focus on your current work-in-progress.

Retail price: \$18.50
www.lilivestockco.com



Nouveau Necklace Crochet Kit >

BY EWOODSTORY

Crochet meets woodwork in this unique necklace kit. Choose from either the birch or walnut finish and make a statement piece that will show off your crafty skills. The kit includes an easy crochet pattern, in both written and chart forms, that will guide you as you stitch up the background and fastening cords for this eye-catching accessory. Then, follow the thorough instructions to sew your crocheted pieces onto the wooden frames for a trendy style that will get plenty of compliments.

Retail price: \$29.95
www.etsy.com/shop/eWoodStory



Crochet & Knit Shop

YOUR ONE-STOP SOURCE FOR
CROCHET AND KNITTING SUPPLIES!

BIT.LY/MERRY-MOOSE-VIDEO



BIT.LY/AMEES-BABIES-ORGANIZER



BIT.LY/ONE-HOUR-COWL-KIT

- ONE-OF-A-KIND PATTERNS AND KITS
- YARN AND SUPPLIES
- MAGAZINE ISSUES
- WEB SEMINARS

Shop online at www.CrochetandKnitShop.com
or call (800)610-1464



Autumn Leaves Scarf



Skill Level

Celebrate the season with this festive fall scarf! Two sizes of oak leaves and simple circular motifs are stitched together to create this impressive piece that's guaranteed to get anyone in the mood for pumpkins, crisp weather, and, of course, changing leaves.

Designed by Suzann Thompson

Materials

Yarn weight: 

Yarns used: Amazing and Wool-Ease by Lion Brand

- 2 skeins Amazing by Lion Brand, 53% wool, 47% acrylic (147 yds/50g) in color 204 Mesa (A)
- 1 skein Wool-Ease by Lion Brand, 80% acrylic, 20% wool (197 yds/85g) in each of colors 171 Gold (B) and 199 Pumpkin (C)

Tools:

- U.S. size H-8 (5mm) crochet hook, or size required for gauge
- Sturdy fabric, such as denim or burlap, approx 6½" wide x 55" long
- Medium-sized safety pins, approx 85 total
- Yarn needle

Yarn Alternatives

Save: Pacific by Cascade Yarns
Spend: Rhythm Superwash by Jojoland
Splurge: Liberty Wool by Classic Elite Yarns

Finished measurements

Approx 6½" wide x 55" long

Stitches used

Single crochet
Half double crochet
Double crochet
Half treble crochet
Treble crochet

Gauge

16 dc and 9 rows = 4" (10cm) using B or C

Special abbreviations

Dc-hdc-tog: Yo, insert hook in next st, yo and pull up a loop, yo and draw through 2 loops on hook, yo, insert hook in next st, yo and pull up a loop (4 loops on hook), yo and draw through rem loops on hook.

Htr (half treble crochet): [Yo] twice, insert hook in indicated st, yo and pull up loop (4 loops on hook), yo and draw through 2 loops, yo and draw through rem 3 loops on hook.

PATTERN

Large Gambel oak leaf (make 11 in A and 6 in B, or more as needed)

Row 1 (RS): Ch 6, hdc 1 in 3rd ch from hook, hdc 1 in next ch, dc2tog over next 2 ch, ch 2, turn.

Row 2: Hdc2tog over first 2 sts (some sts rem unworked). Ch 9, turn.

Row 3: Dc 1 in 4th ch from hook, dc 1 in next 4 ch, dc-hdc-tog over next ch and st, skip t-ch from previous row, ch 2, turn.

Row 4: Hdc2tog over first 2 sts, hdc 1 in next st (some sts rem unworked). Ch 8, turn.

Row 5: Dc 1 in 4th ch from hook, dc 1 in next 4 ch, dc-hdc-tog over next 2 sts, ignore t-ch from previous row, ch 1, turn.

Row 6: Sc2tog over first 2 sts, hdc 1 in next st, dc 1 in next st (some sts rem unworked). Ch 6, turn.

Row 7: Dc 1 in 4th ch from hook, dc 1 in next 2 ch, hdc 1 in next st, sc2tog over next 2 sts, ch 1, turn.



Central vein: Stretch leaf from side to side to see spaces created when lobes were joined to each other. Look at the RS of leaf and hold yarn underneath (on WS). Insert hook in first sp in center of leaf, ch 2 or 3 (making the ch as hook goes "through" the leaf). With yarn still at WS of leaf, sl st in the st that joins the lobes. Continue filling the spaces with ch and sl st in the sts where the lobes join tog. End with a sl st just past the last sp. Fasten off. Use hook to take the yarn end through the leaf back to the WS.

Small Gambel oak leaf (make 11 in A and 6 in B, or more as needed)

Row 1 (RS): Ch 9, dc 1 in 4th ch from hook, hdc 1 in next 3 ch, dc2tog over next 2 ch, ch 3, turn.

Row 2: Skip t-ch from last row, dc2tog in first 2 sts, hdc 1 in next st (some sts rem unworked). Ch 9, turn.

Row 3: Tr 1 in 5th ch from hook, htr 1 in next 2 ch, dc 1 in next ch, hdc 1 in next ch, dc2tog over next 2 sts, ch 3, turn, ignoring t-ch of last row.

Row 4: Skip t-ch from last row, dc2tog in first 2 sts, hdc 1 in next st (some sts rem unworked). Ch 6, turn.

Row 5: Dc 1 in 4th ch from hook, dc 1 in next ch, hdc 1 in next ch, sc2tog over next 2 sts, ch 1, turn, ignoring t-ch of last row.

Row 6: Sc 1 in first st, hdc 1 in next st (some sts rem unworked). Ch 5, turn (half of leaf complete, from center to side).

Row 7: Dc 1 in 4th ch from hook, dc 1 in next ch, hdc 1 in next st, sl st in next st, ch 1, turn (top lobe made; leaf continues for other half, joining to first half down the center).

Row 8: Sc 1 in sl st of prev row, hdc 1 in next st (some sts rem unworked). Ch 5, turn.

Row 9: Dc 1 in 4th ch from hook, dc 1 in next ch, hdc 1 in next st, 2 sc in next st, join with sl st to the base of row 5, ch 1, sl st in base of row 4, turn.

Row 10: Skip sl sts of prev row, 2 dc in first sc, hdc 1 in next st (some sts rem unworked). Ch 7, turn.

Row 8: Sc 1 in first st, hdc 1 in next 2 sts (some sts rem unworked). Ch 5, turn (half of leaf complete, from center to side).

Row 9: Dc 1 in 4th ch from hook, dc 1 in next ch, dc 1 in next st, hdc 1, sc 1, ch 1, turn (top lobe made; leaf continues for other half, joining to first half down the center).

Row 10: Sc 1 in first st, hdc 2 (some sts rem unworked). Ch 5, turn.

Row 11: Dc 1 in 4th ch from hook, dc 1 in next ch, dc 1 in next st, hdc 1, 2 sc in next st, join with sl st to the base of row 7, ch 1, turn.

Row 12: Skip sl st, 2 sc in first sc, hdc 1, dc 1 (some sts rem unworked). Ch 5, turn.

Row 13: Dc 1 in 4th ch from hook,

dc 1 in next ch, dc 3, [1 dc, 1 hdc] in next st, join with sl st at the base of row 5, ch 1, turn.

Row 14: Skip sl st, 2 hdc in first hdc, hdc 1 in next st (some sts rem unworked). Ch 6, turn.

Row 15: Dc 1 in 4th ch from hook, dc 1 in next 2 ch, dc 2, [1 dc, 1 hdc] in next st, join with sl st at the base of row 3, ch 1, turn.

Row 16: Skip sl st, 2 hdc in first hdc (some sts rem unworked). Ch 3, turn.

Row 17: Hdc 1 in 3rd ch from hook, hdc 1 in next st, 2 dc in next st, join with sl st at the base of row 1.

Stem: Ch 6, hdc 1 in 3rd ch from hook, sl st in next 3 ch.

Row 11: Tr 1 in 5th ch from hook, htr 1 in next 2 ch, dc 1, hdc 1, 2 dc in next st, join with sl st to the base of row 3, ch 1, sl st in base of row 2, turn.

Row 12: Skip sl sts of prev row, 2 dc in first dc, hdc 1 (some sts rem unworked). Ch 5, turn.

Row 13: Dc 1 in 4th ch from hook, hdc 1 in next ch, hdc 2, 2 dc in next st, join with sl st to the base of row 1.

Stem: Ch 6, hdc 1 in 3rd ch from hook, sl st in rem ch.

Central vein: Work as for large leaf.

Hdc filler motif (With C, make 13 or more as needed)

Ch 4, join with sl st in first ch to form a ring.

Rnd 1: Ch 1, 9 hdc in ring, cut yarn, needle-join.

Sc filler motif (With C, make 34 or more as needed)

Ch 4, join with sl st in first ch to form a ring.

Rnd 1: Ch 1, 7 sc in ring, cut yarn, needle-join.

Finishing

Weave in ends. Block leaves, stretching t-ch at the end of each lobe from side to side to flatten tips of lobes.

Arrange leaf motifs, face-down, on fabric template. Use as many motifs as possible, placing them so their edges touch. Try to vary the directions of the leaves and distribute the colors fairly evenly across the template.

Some spaces between leaves will be too small to fit another leaf in, but too large for looks and stability.

Fill in these spaces with one or more filler motifs.

When you are satisfied with the arrangement, safety pin motifs in place.

Cut sewing lengths of each yarn, and split each length into two 2-ply lengths.

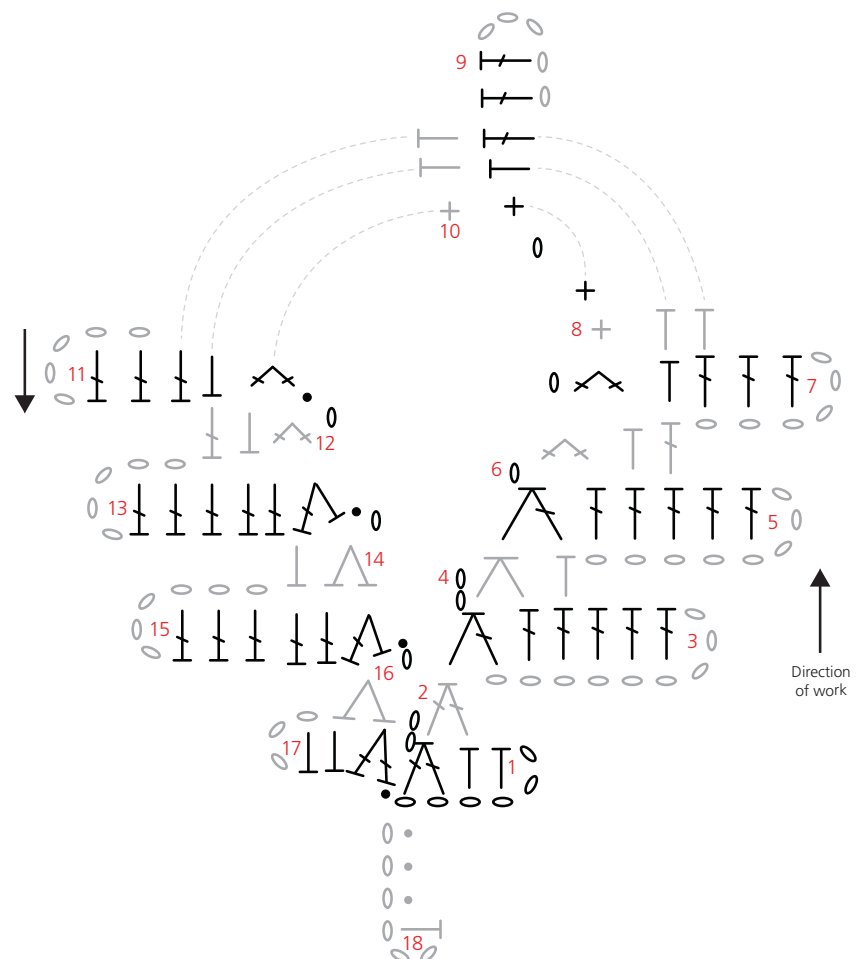
With split yarn that matches one of the motifs, sew motifs tog where they touch, skimming needle under the loops just inside the edges of the motifs. Weave in and cut sewing

yarn when necessary; restart in another place.

Remove pins, set fabric template aside, turn scarf RS up. ❤️

"Gambel Oak Leaves" pattern adapted and printed with permission from Crochet Garden: Bunches of Flowers, Leaves, and Other Delights, © 2012 by Suzann Thompson, Lark Crafts, an imprint of Sterling Publishing Co., Inc.

Large Gambel Oak Leaf



Download an easy-to-follow tutorial on assembly of scarf at LoveofCrochet.com.



Simple Lace Edge Shawlette



Skill Level

Basic single crochet stitches worked in clever short rows craft this simple and stylish design. The generous length allows you to wear it as a shawl or a scarf for multiple styling options that will enhance your fall wardrobe. Crochet the lacy border first, then work into the opposite side of your foundation chain for the body of this inspiring pattern.

Designed by Marly Bird

Materials

Yarn weight: 

Yarn used: Seraphim by Bijou Basin Ranch

- 3 skeins Seraphim by Bijou Basin Ranch, 95% angora, 5% viscose (435 yds/50g) in color 03 Smoke

Tools:

- U.S. size G-6 (4.25mm) crochet hook, or size required for gauge
- Stitch markers
- Yarn needle

◆ Yarn Alternatives ◆

Save: Angora Lace by Wisdom Yarns

Spend: Angora Merino Yarn by LB Collection®

Splurge: Angora by Plymouth Yarn

Finished measurements

80" across, after blocking

Stitches used

Single crochet
Double crochet

Technique used

Short rows

Gauge

18 sc and 14 rows = 4" (10cm), after blocking

Notes

Bottom trim is made first then short rows are worked to make the body of the shawllette.



PATTERN

Ch 363.

Border

Row 1 (RS): Dc 1 in 3rd ch from hook and in each across, turn. (361 dc)

Pm in 181st dc, center st.

Row 2: Ch 1, sc 1 in dc, *ch 4, skip 2 dc, sc 1 in next dc; rep from * to end, turn. (60 ch-4 sp)

Row 3 (RS): Ch 1, *4 sc in 4-ch sp; rep from * to end.

Fasten off.

Body

Body of shawl is worked in opposite edge of foundation row.

Row 1 (RS): 15 sts to right of marked st, join yarn with a sl st, ch 1, sc 1 in same st as join and in next 30 sts, turn. (31 sc)

Row 2 (WS): Ch 1, sc to end of row, working in foundation ch sc 3, sc2tog, turn.

Row 3: Ch 1, sc to end of row, working in foundation ch sc 3, sc2tog, turn.

Rep rows 2 and 3 eight times more. (9 turns each side)

Row 4: Ch 1, sc to end of row, working in foundation ch sc 3, turn.

Row 5: Ch 1, sc to end of row, working in foundation ch sc 3, turn.

Rep rows 4 and 5 six times more. (7 turns each side)

Row 6: Ch 1, sc to end of row, working in foundation ch sc 5, turn.

Row 7: Ch 1, sc to end of row, working in foundation ch sc 5, turn.

Rep rows 6 and 7 fifteen times more. (16 turns each side)

Row 8: Ch 1, sc to end of row, working in foundation ch sc 10, turn.

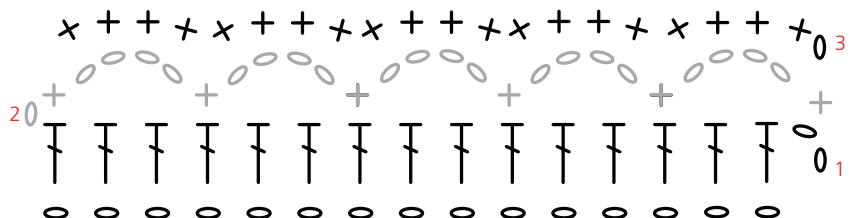
Row 9: Ch 1, sc to end of row, working in foundation ch sc 10, turn.

Rows 10 and 11: Ch 1, sc to end of row, working in foundation ch sc to end, turn.
Fasten off.

Finishing

Weave in ends. Block. ♥

Simple Lace Edge Shawlette



Floral Motif Kimono Top



Skill Level

Comfort meets elegance in this fashionable sweater! Oversized and effortlessly on-trend, this lacy design is perfect for work or play. The shaping features plenty of positive ease to flatter any figure, while the eye-catching stitch pattern gives it a sophisticated touch.

Designed by Marly Bird



Materials

Yarn weight: 

Yarn used: Kilimanjaro by Miss Babs

- 1 (2, 2) skeins Kilimanjaro by Miss Babs, 85% superwash Bluefaced Leicester wool, 15% nylon (1750 yds/400g) in color Aubergine

Tools:

- U.S. size G-6 (4mm) crochet hook, or size required for gauge
- Stitch markers
- Yarn needle

◆ Yarn Alternatives ◆

Save: Painted Desert by Knitting Fever

Spend: Mechita by Malabrigo

Splurge: Happiness Fingering by Kolláge Yarns

Sizes

Women's Small / Medium (Large / Extra Large, 2X/3X)

Finished measurements

Bust: 40 (48, 56)"

Length: 21 (24½, 28)"

Stitches used

Single crochet
Double crochet

Gauge

4 repeats and 10 rows = 5" (12.5cm)
in lace patt, after blocking
1 motif = 3½" (9cm), after blocking

Special abbreviations

2-dc-cl: Yo and insert hook into indicated st or sp, yo and pull up a loop, yo and draw through 2 loops (2 loops on hook), yo and insert hook into same sp, yo and pull up a loop, yo and draw through 2 loops, yo and draw through all remaining loops.

3-dc-cl: Yo and insert hook into indicated st or sp, yo and pull up a loop, yo and draw through 2 loops (2 loops on hook), *yo and insert hook into same sp, yo and pull up a loop, yo and draw through 2 loops; rep from * once, yo and draw through all remaining loops.

Stitch pattern

Lace

Note: Lace patt begins with a foundation ch for gauge swatching purposes only. In the actual garment, the lace is worked directly onto the motif strips.

Ch a multiple of 6 + 2 for foundation.

Row 1 (WS): Skip 1 ch, sc 1 in 2nd ch from hook and in each ch to end, turn.

Row 2: Ch 4 (counts as 1 dc and ch-1), skip 2 sc, 3 dc in next sc, ch 1, skip 2 sc, dc 1 in next sc, *ch 1, skip 2 sc, 3 dc in next sc, ch 1, skip 2 sc, dc 1 in next sc; rep from * to end, turn.

Row 3: Ch 4 (counts as 1 dc and ch-1), skip first ch-1 sp, 3 dc in center of next 3-dc group, *ch 1, skip next ch-1 sp, dc 1 in next dc, ch 1, skip next ch-1 sp, 3 dc in center of next 3-dc group; rep from * to last sp, ch 1, dc 1 in 3rd ch of beg ch, turn.

Rep row 3 for patt.

PATTERN

Motif strips (make 2)

First motif

Ch 6. Sl st in first ch to form a ring.

Rnd 1: Ch 4 (counts as 1 dc and 1 ch), [1 dc, ch 1] 15 times in ring, join with sl st in 3rd ch of beg ch-4. (16 dc)

Rnd 2: Sl st in next ch-1 sp, ch 3 (does not count as a st), 2-dc-cl in same ch-1 sp as last sl st, ch 3, *3-dc-cl in next ch-1 sp, ch 3; rep from * around, join with sl st in first 2-dc-cl.

Rnd 3: Sl st in last ch-3 sp, ch 1, sc 1 in same sp as last sl st, ch 5, sc 1 in next ch-3 sp, *[5 dc, ch 5, 5 dc] in next ch-3 sp, sc 1 in next ch-3 sp**, [ch 5, sc 1 in next ch-3 sp] twice; rep from * 3 more times, ending last rep at **, ch 5, join with a sl st in first sc. Fasten off.

Second motif

Rnds 1 and 2: Work as for first motif.

Rnd 3 (joining rnd): Sl st in next ch-3 sp, ch 1, sc 1 in same sp as last sl st, * [ch 5, sc 1 in next ch-3 sp] twice, [5 dc, ch 5, 5 dc] in next ch-3 sp, sc 1 in next ch-3 sp; rep from * once more, [ch 5, sc 1 in next ch-3 sp] twice, [5 dc, ch 2, sl st in corresponding corner sp of previous motif, ch 2, 5 dc] in next



ch-3 sp, sc 1 in next ch-3 sp, [ch 2, sl st in corresponding edge sp of previous motif, ch 2, sc 1 in next ch-3 sp] twice, [5 dc, ch 2, sl st in corresponding corner sp of previous motif, ch 2, 5 dc] in next ch-3 sp, join with a sl st in first sc.

Remaining motifs

Make 10 (12, 14) more motifs same as second motif, joining them into a

long strip. (12 [14, 16] motifs in each strip, 24 [28, 32] motifs total)

Right half

Right front

With WS facing, join yarn with sl st at corner, ready to work up long edge of strip.

Row 1 (WS): Ch 1, work 103 sc evenly across half the motifs only

(6 [7, 8] squares; approx 17 sc per motif). Leave rem 6 (7, 8) motifs unworked, turn.

Work 12 (16, 20) rows in lace patt, beg with row 2. Do not fasten off.

Sleeve

Row 1 (WS): Ch 3 (counts as 1 dc), 3 dc in center of first 3-dc group, work in patt to last six 3-dc groups, 3 dc in center of next 3-dc group, ch 1, dc 1 in next dc, leave rem sts unworked, turn. (12 [13, 14] 3-dc groups)

Row 2: Ch 4 (counts as 1 dc and 1 ch), 3 dc in center of first 3-dc group, work in patt to last 3-dc group, 2 dc in center dc of last 3-dc group, dc 1 in top of beg ch-3 of previous row, turn.

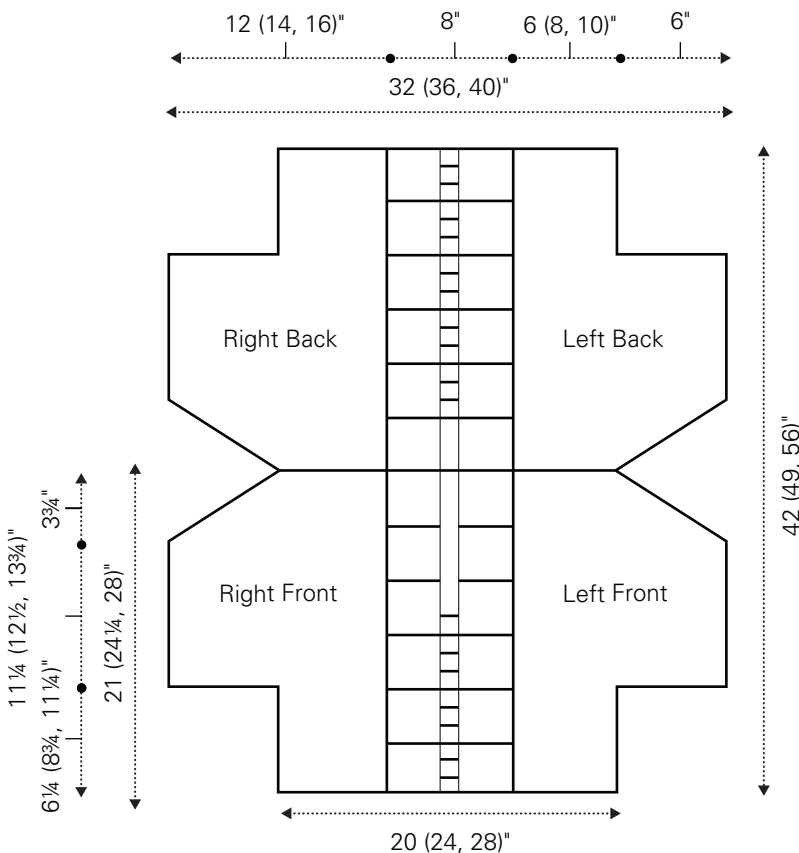
Row 3: Ch 2 (does not count as a st), skip first dc, dc 1 in 2nd dc, skip 3rd dc, ch 1, skip first ch-1 sp, dc 1 in next dc, work in patt to end of row, turn. (11 [12, 13] 3-dc groups)

Row 4: Work in patt to last 3-dc group, 3 dc in center of last 3-dc group, ch 1, dc2tog over last 2 dc (skipping ch-1 sp between them), turn.

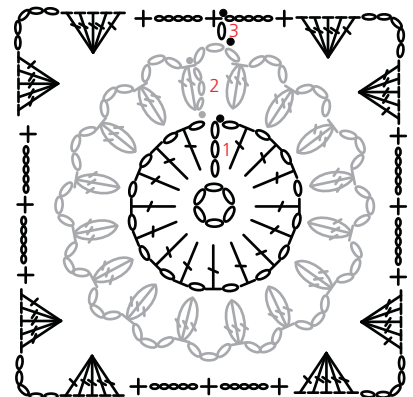
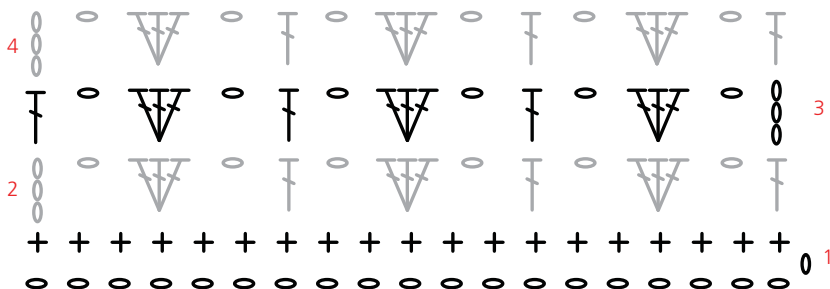
Row 5: Ch 3 (counts as 1 dc), 3 dc in center dc of first 3-dc group, work in patt to end of row, turn.

Rep rows 2–5 once more, then rows 2–4 once more. (9 [10, 11] 3-dc groups)
Fasten off.

Floral Motif Kimono Top



Lace



Right back

With RS facing, join yarn with a sl st at opposite corner of same long edge of strip, and work other half of the strip the same way. In other words, RS and WS switch for this portion.

Left half

Make same as right half, then rotate piece 180 degrees (see schematic for orientation of pieces).

Finishing

Lay out the two halves as shown in schematic, and pm at inner edge of each half, $3\frac{1}{2}$ (4, $4\frac{1}{2}$) motifs or ($12\frac{1}{4}$ [14, $15\frac{1}{4}$]") above bottom edge. Left front will be on the right and vice versa when facing the RS of garment. See schematic for clarification.

With RS facing, join yarn with a sl st at lower inner corner of left front (bottom corner of bottommost motif).

Ch 3 (counts as 1 dc), dc 1 in lower inner corner of right front, [1 dc in left front edge, 1 dc in right front edge] 7 more times across bottom pair of motifs, *dc 1 in right front edge, dc 1 in left front edge; rep from * to marker, working about 8 dc in edge of each motif, and ending with dc in left front edge. Ch 3, sl st to right front edge. Fasten off and remove markers.

Join top 5 (6, 7) motifs or ($17\frac{1}{2}$ [21, $24\frac{1}{2}$]") in same manner for back.

Assembly

Block carefully to measurements. Fold in half at shoulders. Sew shoulder seams. Sew top and bottom of sleeves. Sew side seams. Weave in ends. ❤️



FULL SPEED AHEAD
into the fun zone! -----



Wheels actually turn!



Discover how to easily crochet fun cars and trucks with wheels that turn and parts that move, including a taxicab, police car, ambulance, and a dump truck that really lifts and dumps—all using simple craft materials and yarn!

By Cathy Smith | \$18.99

Find this book at your **friendly local yarn shop** or online at **ShopMartingale.com**.

Martingale
Create with Confidence



Connect with us!



Five-piece Mitered Shawl



Skill Level

Dare to be different by ditching your summer cardigan. Instead, go with this easy-to-work and easy-to-wear mitered wrap. The interesting construction consists of three Tunisian mitered squares and two mitered triangles that are joined as you go, making your finishing work a breeze.

Designed by Sheryl Thies

Materials

Yarn weight: 

Yarn used: Heathered Fingering by Blackberry Ridge Woolen Mill

- 3 skeins Heathered Fingering by Blackberry Ridge Woolen Mill, 75% wool, 25% nylon (380 yds/113g) in color Iris

Tools:

- U.S. size J-10 (6mm) Tunisian crochet hook, or size required for gauge
- U.S. size I-9 (5.5mm) crochet hook
- Stitch marker
- Yarn needle

◆ Yarn Alternatives ◆

Save: Cascade 220 Fingering by Cascade Yarns

Spend: Sock by Malabrigo

Splurge: Breathless by Shalimar Yarns

Finished measurements

Center back depth: 21"

Center front length: 30"

Techniques used

Tunisian crochet
Miters

Gauge

14 sts = 4" (10cm) in Tss using larger hook

Special abbreviations

Foundation forward pass: *Insert hook in next ch, yo and pull up a loop, leave loop on hook, rep from * across. Do not turn.

Foundation return pass: Yo and draw through 1 loop, *yo and draw through 2 loops on hook; rep from * until 1 loop remains.

Tss (Tunisian simple stitch): Insert hook under next vertical bar, yo and pull up a loop, leave loop on hook.

Tps (Tunisian purl stitch): Wyf, insert hook from right to left behind front vertical bar, yo and pull up a loop, leave loop on hook.

TwTss (Twisted Tunisian simple stitch): With hook sitting over next vertical bar, move hook from left to right, picking up the bar and twisting hook upward, yo and pull up a loop, leave loop on hook.

Double dec return pass: Yo and draw through 1 loop, [yo and draw through 2 loops] until 2 loops before marked stitch, yo and draw through 4 loops on hook, [yo and draw through 2 loops] until 1 loop remains.

Left slant dec return pass: *Yo and draw through 2 loops; rep from * until 1 loop remains.

Right slant dec return pass: Yo and draw through 1 loop, *yo and draw through 2 loops; rep from * until 3

loops on hook, yo and draw through 3 loops.

Sc BO: Insert hook behind vertical bar, yo and pull up a loop, yo and draw through 2 loops.

Notes

If you are new to Tunisian crochet miters, check out the Beginner's Guide in the Spring 2015 Issue for a helpful resource.

The miter double dec creates a 3-st cluster on the next forward pass; work only the center st and move marker in stitch just made. Each miter forward pass will have 2 stitches less than previous forward pass.

The triangle requires a single dec made on the return pass. This creates a 2-st cluster.

The left slant dec creates the 2-st cluster on the left edge. On the next forward pass work only the outermost stitch.

The right slant dec creates the 2-st cluster on the right edge. On the next forward pass the cluster is skipped because the stitch that results from the last stitch worked on the return pass is the stitch already on the hook.

PATTERN

Piece 1 miter

Ch 107 sts.

Row 1A: Work foundation forward pass. (107 sts on hook)

Row 1B: Work foundation return pass.

Row 2A: Work Tps forward pass. Pm on center st. (53 sts before and after marker)

Row 2B: Work double dec return pass.



Row 3A: Work TwTss to 3-st cluster, Tss in center st and move marker to st just made, continue TwTss to last st, end Tss.

Row 3B: Work double dec return pass.

Rows 4–19: Rep rows 3A and 3B 16 times.

Row 20A: Work Tss to 3-st cluster, Tss in center st and move marker to st just made.

Row 20B: Work double dec return pass.

Rows 21–29: Rep rows 21A and 21B 10 times.

Row 30A: Work TwTss to 3-st cluster, Tss in center st and move marker to st just made, continue TwTss to last st, end Tss.

Row 30B: Work double dec return pass.

Rep rows 30A and 30B until 3 loops rem at end of forward pass, yo and draw through 3 loops. Do not fasten off.

Piece 2 miter

With separate strand of yarn, ch 53. Cut yarn and set aside.

With loop from miter 1 on hook, pick up 53 loops along left side of miter 1. (54 loops on hook)

Work foundation forward pass in 53 chs. (107 loops on hook)

Work as for piece 1, beg with foundation return pass.

Piece 3 left triangle

With loop from piece 2 on hook, pick up 53 sts. (54 loops on hook)
Work foundation return pass.

Row 1: Work Tps forward pass and left slant dec return pass.

Row 2: Work TwTss forward and left slant dec return passes.

Rows 3–18: [Rep row 2] 16 times.

Row 19: Work Tss forward and left slant dec return passes.

Rows 20–28: [Rep row 19] 9 times.

Continue working TwTss forward and left slant dec return passes until 3 sts remain at end of forward pass, yo and pull through loops.

Sc BO 1 st.

Fasten off.

Piece 4 miter

Ch 53, pick up 54 sts along right side of piece 1 miter. (107 loops on hook)
Work as for piece 1 miter, beg with foundation return pass. Fasten off.

Piece 5 right triangle

Row 1A: Pick up 54 sts along top right edge of piece 4 miter.

Row 1B: Work foundation return pass.

Row 2: Work Tps forward pass and right slant dec return pass.

Row 3: Work TwTss forward and right slant dec return pass.

Rows 4–19: [Rep row 3] 16 times.

Row 20: Work Tss forward and right slant dec return pass.

Rows 21–31: [Rep row 20] 9 times.

Continue working TwTss forward and right slant dec return passes until 3 sts remain at end of forward pass, yo and pull through loops. Sc BO 1 st. Fasten off.

Finishing

With smaller crochet hook, sc around edges. Weave in ends. Block. ❤️

Beginner Bullion Scarf

••••
Skill Level

Don't be intimidated by bullion stitches any longer! These pretty wrapped stitches compose the border of this unique scarf, and they're easier to create than you think. The body of the scarf is made with simple treble crochet stitches, harmonizing beautifully with the edging to give you a smart accessory that's also a fabulous skill builder.

Designed by Suzann Thompson



Materials

Yarn weight:  4

Yarn used: Deluxe Worsted Superwash by Universal Yarn

- 2 skeins Deluxe Worsted Superwash by Universal Yarn, 100% superwash wool (220 yds/100g) in color 745 Cobalt

Tools:

- U.S. size H-8 (5mm) crochet hook, or size required for gauge
- Yarn needle

Yarn Alternatives

Save: Wool of the Andes Superwash by Knit Picks

Spend: Valley Superwash by Valley Yarns

Splurge: Cascade 220 Superwash by Cascade

Finished measurements

7" wide x 56½" long

Stitches used

Half double crochet
Treble crochet

Techniques used

Bullion stitch
Cluster stitches

Gauge

17 sts = 4" (10cm) in patt

Special abbreviations

Joined tr (joins tr to t-ch-4): Yo, insert hook in 2nd ch from hook yo and pull up a loop, pull up a loop in indicated st (4 loops on hook), [yo and draw through 2 loops] 3 times.

3tr-CL (3 treble cluster): *[Yo] 2 times, insert hook in indicated st yo and pull up a loop, [yo and draw through 2 loops] twice (2 loops on hook); working in same st rep from * 2 more times (4 loops on hook), yo and draw through all loops on hook.

Note: The scarf is created from the center out to each end. The foundation chain will have two sets of sts in it, going in opposite directions.

Special techniques

Bullion stitch:

Step 1: Lay a tapestry needle on hook, lined up along the length of the hook, covering the hook end, AND under the loop on the hook.

Step 2: Wind yarn 8 times around hook and needle.

Step 3: Slide needle with wraps back slightly from the hook; with hook end only insert hook in st, yo and pull up a loop. This loop will be trapped on the hook, underneath the tapestry needle.

Step 4: Drop yarn from your hand. Making sure the needle is centered over the hook end, use your thumb and forefinger to hold the wraps in place.

Step 5: Draw the hook with the loop out from under the wrapped needle, until the st stands up fairly straight.

Step 6: Put tapestry needle aside. The working yarn is at the base of the bullion st. Gently bring up the working yarn and ch 1 to secure bullion st. Avoid tightening the yarn to keep the st as straight as possible.



Download an easy-to-follow tutorial on the bullion stitch at LoveofCrochet.com.

PATTERN

First half

Ch 36.

Row 1 (WS): 5 tr in 8th ch from hook (t-ch counts as 1 tr plus 3 skipped ch), *skip 3 ch, tr 1 in next ch, skip 3 ch, 5 tr in next ch; rep from * twice, skip 3 ch, tr 1 in last ch, turn. (25 tr)

Row 2: Ch 4, [joined tr, tr] in first st, *skip 2 sts, tr 1 in next st (center st of 5-tr group), skip 2 sts, 5 tr in next st; rep from * twice, skip 2 sts, tr 1 in next st, skip 2 sts, 3 tr in next st, turn.

Row 3: Ch 4 (counts as tr in the first st), *skip 2 sts, 5 tr in next st (single tr between shells), skip 2 sts, tr 1 in next st; rep from * 3 times, placing last tr in top of t-ch of previous row, turn.

Rep rows 2 and 3 until piece measures 25", ending with row 2.

Trim

Row 1 (WS): Ch 4 (counts as hdc and ch 2), skip next st, hdc 1 in next st, *ch 1, skip next st, hdc 1 in next st; rep from * 9 times, ch 2, skip 1 st, hdc 1 in next st, turn.

Row 2: Ch 6 (counts as tr and ch 2), skip ch-sp, 3tr-CL in next hdc, *ch 1, skip ch-sp, tr 1 in next hdc, ch 1, skip ch-sp, 3tr-CL in next hdc; rep from * 4 times, ch 2, skip 2 ch, tr 1 in next ch, turn.

Row 3: Ch 4 (counts as hdc, ch 2), skip next ch-sp, *hdc 1 in next st, ch 1, skip next ch-sp; rep from * 10 times, ch 2, skip 2 ch, hdc 1 in next ch, turn. If completing first half of scarf, fasten off here. If completing second half of scarf, move to trim row 4.

Second half

Turn piece so foundation ch is facing.

Row 1 (WS): Working into free loops of foundation ch, draw up a loop in first ch (it already has a tr in it AND it is the very first ch of the piece, so yarn end is here), ch 4, *skip 3 ch, 5 tr in next ch (already has 5 tr in it), skip 3 ch, tr 1 in next ch; rep from * 3 times, turn.

Row 2: Work as for row 2 of first half.

Row 3: Work as for row 3 of first half.

Rep rows 2 and 3 exactly as many times as for the first half of the scarf, ending with row 2.

Trim

Work trim rows 1, 2, and 3 as for first half, but do not cut yarn.

Edging

Trim row 4 (RS):

Note: In this row, you will make bullion sts separated by picots. As described in the instructions for bullion st, you will secure the bullion sts with a ch-1. The picot st follows directly after the bullion st, and it is created by "ch 3, sl st in 4th ch from hook," so the sl st will be made in the ch-st which secures the bullion st.

Ch 1, sl st in first hdc, *sl st in next ch-sp, ch 4, sl st in 4th ch from hook, skip next hdc and ch-sp; [bullion st with 8 wraps, ch 3, sl st in 4th ch from hook] 5 times in next hdc, skip next ch-sp and hdc, sl st in next ch-sp, ch 2; rep from * once, sl st

in next ch-sp, ch 4, sl st in 4th ch from hook, skip next hdc and ch-sp; [bullion st with 8 wraps, ch 3, sl st in 4th ch from hook] 5 times in next hdc, skip next ch-sp and hdc, sl st in next ch-sp, sl st in 2nd ch of t-ch of trim row 3.

Row 5 (RS): Rotate piece to work along side of scarf, ch 1, sl st in side of t-ch of trim row 3, [ch 1, sl st in side of next tr] twice, ch 1, sl st in side of t-ch of trim row 1, *[ch 1, sl st] twice in side of each tr or tr t-ch (NOT around st); rep from * across side of scarf, ch 1, sl st in side of t-ch for trim row 1, [ch 1, sl st] twice in tr t-ch of trim row 2, ch 1, sl st in side of hdc at end of trim row 3, ch 1.

Row 6 (RS): Rotate piece to work along end, work as for trim row 4.

Row 7 (RS): Rotate piece to work along side of scarf, work as for trim row 5, ending with a sl st in first st of trim row 4, fasten off.

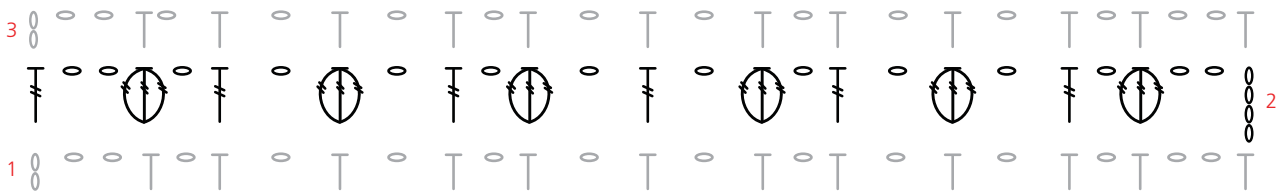
Finishing

Weave in ends, block. ♥

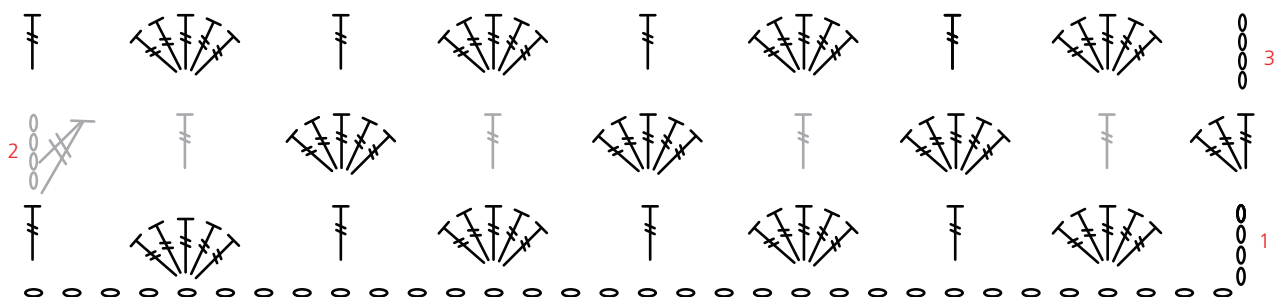


Beginner Bullion Scarf

Trim



Body





A Beginner's Guide to Beading

A bead nestled amid gorgeous yarn is a beautiful sight. Beads add texture to the fabric and sparkle as the light dances across your work. Beads can be added sparingly or in elaborate and intricate patterns. Don't think you have to be an expert crocheter to add a few beads! With a little knowledge, you'll be ready to spice up your crochet projects with some cleverly placed beads.

Bead Basics

There are a plethora of bead types, sizes, shapes and colors. Beads are made from glass, wood, semi-precious stones, pearls, clay, papier-mâché and plastic. They can be round, cubes, triangles and any other shape you can imagine. If you've ever walked into a bead store and seen the large selection of alluring and captivating beads, you understand that beads, like yarn, can be addictive. So, where to begin?

Remember that the yarn and the beads need to work together. Beads are heavy and will add weight to the project. The yarn needs to be sturdy enough to support the added weight, and of course the beads need to have large enough holes to allow the yarn to easily pass through.

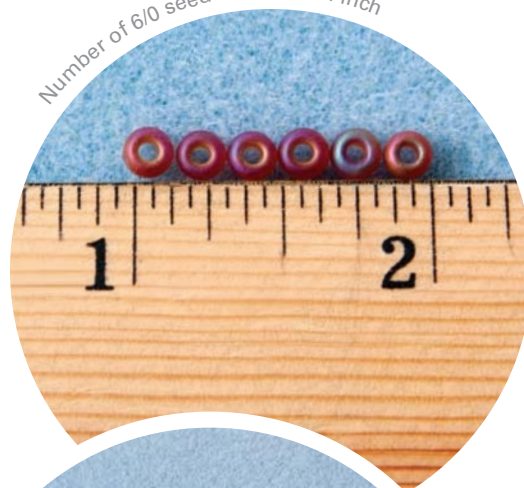
Shannon Jambard, known for her beading knowledge and her passion for helping others, is the owner of Meant to Bead in Sun Prairie, Wisconsin. Knitters and

crocheters in the area seek out Shannon's help when looking to add beads to their work. Meant to Bead is well stocked with more beads than one can imagine. Shannon and her staff are always ready to help demystify bead-related matters. Recently, I visited with Shannon and asked for an introduction to beads for crocheters. Her comments and suggested purchases were truly enlightening and left me feeling even more excited about adding beads to my projects.

Seed Beads

There are many different categories of beads, but "seed beads" are most frequently used for crochet. While varying in size, seed beads usually have a larger hole than other beads. Most of the high-quality seed beads come from Japan or the Czech Republic. Japanese seed beads are more uniform and nearly perfect, but they offer fewer styles. Czech beads come in more styles but have less uniformity in size, shape and finish.

Number of 6/0 seed beads in an inch

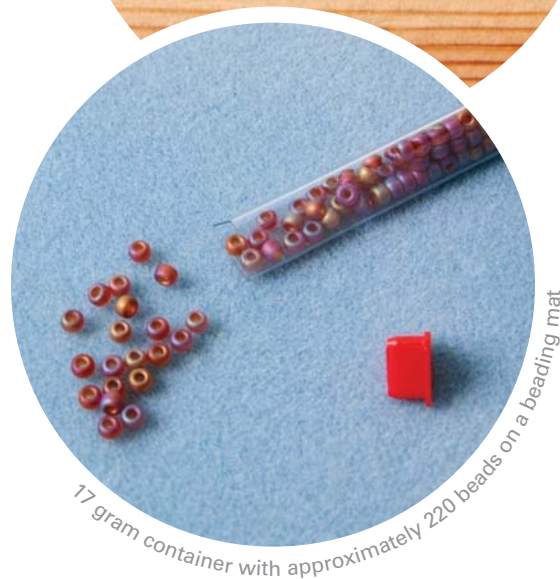


Bead Size

In the bead industry, “aught” is the term for classifying seed beads, while other beads are sized in millimeters. The size is usually written as 6°, or 6/0. The number indicated is the number of beads per inch. The smaller the number, the larger the bead. However, there is variation between manufacturers, so keep in mind the measurement is not exact, only an approximation.

A 6/0 bead usually works well with lace, fingering, sport and DK weight yarn. The bead should slip up and down the yarn freely. Any beads that catch as you are threading them on the yarn should be discarded immediately. Even a slightly rough edge will cause wear and tear on the yarn and cause the yarn to break down over time, shortening the lifespan of the project.

Before buying beads, determine the number required for the project. Always plan on buying extra beads because there may be a few that need to be discarded due to irregularities, and a few always escape to the floor, never to be seen again. Beads are sold in packages by weight. A bead shop owner or employee can tell you approximately how many beads are in a container. The triangular 17 gram container shown to the right contains approximately 220 6/0 seed beads.

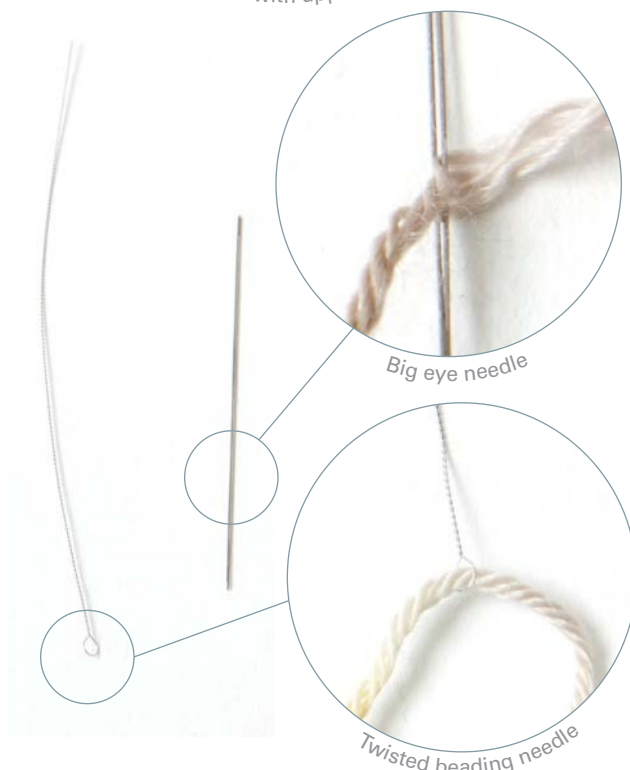


Tools

There are a few inexpensive tools that can help ease the task of getting the beads on the yarn. A beading mat is essential, unless you want to chase runaway beads all over your workspace. The velour-like material has no loops, so the beading needle does not catch and the fibers help control the beads.

Pre-Strung Beads

One way to add beads to your crochet projects is to pre-string them on your yarn with a beading needle before you make your first stitch. There are two types of needles, a big eye and a twisted beading needle, that can be used for threading beads onto the yarn. Made of stainless steel, the big eye needle is the easiest to thread. The entire length of the needle is the eye, so you can simply pull the 2 strands apart and insert the yarn. The twisted beading needle, made of very thin strands of twisted stainless steel, has a hooplike loop at one end where the yarn is inserted. When you slide a bead up this needle, the hoop collapses and easily passes through the bead.

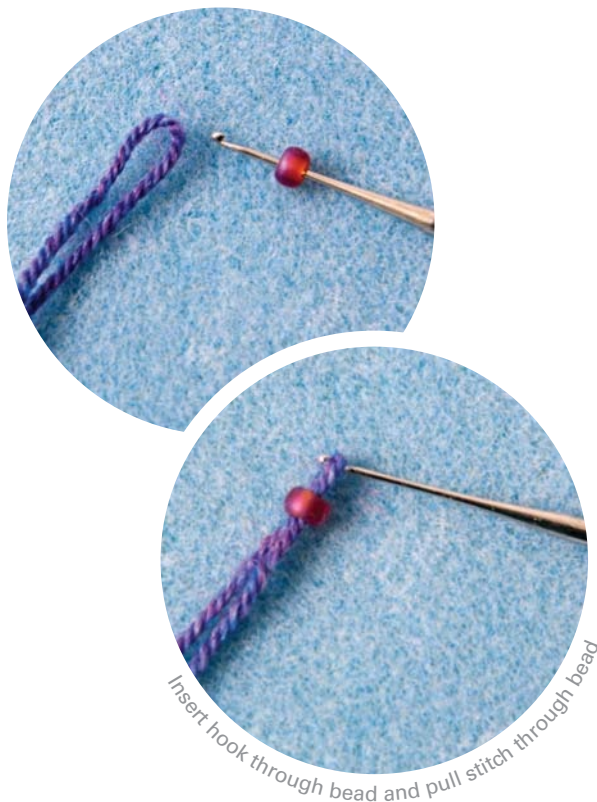


Beginner's Guide to Beading

Hooking Beads

Hooking beads as you go, rather than pre-stringing them on the yarn, is another way of attaching beads to your work. A steel crochet hook is used, and the hook size must be small enough to pass through the hole in the bead. Hook manufacturers are not consistent with sizing, so rely on the millimeter size to determine the size of the hook. A U.S. size 10 Susan Bates hook (1.15mm) and a Clover size 6 (1mm) both work well with 6/0 seed beads. To work, insert the hook through a bead, then grab the indicated stitch with your hook and pull the yarn through the bead. The bead will sit securely on the loop as you continue on with your crocheting.

As I was leaving Meant to Bead, Shannon reminded me that I would now look at my crocheting in a totally different way. Her parting words were, "You'll always be wondering where to place your next bead!" I'm thinking she's right. Give beads a chance, and you too will soon be wondering where to place your next bead. ❤️



Dreaming of your next project?

at Patternworks.com
1-800-438-5464

use code **PWQ215**

save 10% off
your first order for a limited time

Featured: #200943 Augusta Shawl

*Excludes clubs and gift certificates

Over 100 yarns and thousands of patterns
Visit us at Patternworks.com
or call 1-800-438-5464

Patternworks™



craft daily

craftdaily.com

GET 1
MONTH
FREE!

OVER
300
VIDEOS

- Jewelry & Beading
- Knitting & Crochet
- Mixed Media
- Spinning & Weaving
- Quilting & Sewing

**New Videos Added
Each Week!**

To get your **Free** 1 month access, see the instructions below.

1

Go to:
<http://bit.ly/LoveCrochet>

2

Use CODE: **LoveCrochet14**
to activate your FREE Month Trial

Lacy Beaded Cowl



Skill Level

Accent an easily memorized pattern with some dazzling beads, and you have a winning combination for an uptown cowl! Dress up your fall fashions with this glamorous accessory for a stylish look that will turn heads. The clever Tunisian crochet stitch pattern creates fabulous texture for a cowl you'll want to wear every day.

Designed by Sheryl Thies

Materials

Yarn weight: 

Yarn used: Tippy Toes by Interlacements

- 1 skein Tippy Toes by Interlacements, 100% superwash merino wool (500 yds/227g) in color Canyon Lands Plus

Tools:

- U.S. size L-11 (8mm) Tunisian crochet hook, or size required to obtain gauge
- U.S. size K-10½ (6.5mm) crochet hook
- Size 6/0 seed beads, 350 total

• Yarn Alternatives •

Save: Sox by Berroco

Spend: Sock by Malabrigo

Splurge: Tosh Sock by Madelinetosh

Finished measurements

28" circumference x 12" deep

Technique used

Tunisian crochet

Gauge

14 sts = 4" in patt

Special abbreviations

Foundation forward pass: *Insert hook in next ch, yo and pull up a loop, leave loop on hook; rep from * across. Do not turn.

Foundation return pass: Yo and draw through 1 loop, *yo and draw through 2 loops; rep from * until 1 loop remains.

Tss forward pass: *Insert hook from right to left behind front vertical bar, yo and pull up a loop, leave loop on hook; rep from * across.

Tss return pass: Yo and draw through 1 loop, *yo and draw through 2 loops; rep from * until 1 loop remains.

Tps forward pass: *Wyf, insert hook from right to left behind front vertical bar, yo and pull up a loop, leave loop on hook; rep from * to last st, end Tss.

Tps return pass: Work as for Tss return pass.

Tss2tog: Insert hook behind 2 vertical bars, yo and pull up a loop.

Sc BO: *Insert hook from right to left behind front vertical bar, yo and pull up a loop, yo and draw through 2 loops on hook; rep from * until all sts are bound off.

PB (place bead): Slide bead up against last st worked, work next st as directed.

Notes

String beads on yarn before starting project. Do not string all beads at once as yarn will fray; rather, string approx ¼ of beads, cutting and rejoining yarn as more beads are strung. Beads are placed between 2 Tps, not worked into a stitch.

PATTERN

With smaller hook, ch 42.

Edging

Row 1A: Change to Tunisian hook and work foundation forward pass. (42 loops on hook)

Row 1B: Work return pass.

Lace pattern

Row 1: *Yo, [Tss2tog] twice, yo, Tss, Tps, PB, Tps, Tss; rep from * to last st, end Tss. Work return pass.

Row 2: *Tss, Tps, PB, Tps, Tss, yo, [Tss2tog] twice; rep from * to last st, end Tss. Work return pass.

Rep rows 1 and 2 for patt until piece measures 28", slightly stretched, ending with row 2 return pass. With smaller hook, Sc BO.

Finishing

Sew cast-on and bind-off edges tog. Weave in ends. Block. ♥





Camilla Shawl

Alternating lattice and shell sections come together to give this traditional shawl a modern twist. Use two colors from the same family for a subtle look, or be daring and choose contrasting colors for a bold, eye-catching style. Regardless of the hues you choose, the rich wool fabric and smart shape of this piece will make it an accessory you wear often.

Designed by Marly Bird

Materials

Yarn weight:  2

Yarn used: Mewesic by Green Mountain Spinnery

- 2 skeins Mewesic by Green Mountain Spinnery, 100% wool (180 yds/56g) in each of colors Purple Rain (A) and Purple Haze (B)

Tools:

- U.S. size H-8 (5mm) crochet hook, or size required for gauge
- Stitch markers
- Yarn needle

◆ Yarn Alternatives ◆

Save: Huntington by Valley Yarns
Spend: Gems Fingering by Louet
Splurge: Angora Merino by Regia

Finished measurements

52" long x 17" wide, after blocking

Stitches Used

Single crochet
Half double crochet
Double crochet

Gauge

16 sts and 5 rows = 4" (10cm) in dc, after blocking

Special stitch

Camel st: Dc 1 in horizontal bar just below front loop (3rd loop of dc st).



Download an easy-to-follow tutorial on how to make the camel st at LoveofCrochet.com.

PATTERN

Solid portion

With A, ch 4 and sl st in first ch to form a ring.

Row 1 (WS): Ch 2 (does not count as a st here or throughout), 7 dc in ring, do not join, turn. (7 dc)

Row 2: Ch 2, 2 dc in each dc across, turn. (14 dc)

Row 3: Ch 2, *dc 1, 2 dc in next dc; rep from * to end, turn. (21 dc)

Row 4: Ch 2, 2 dc in first 2 dc, *dc

2, 2 dc in next dc; rep from * to last 2 dc, 2 dc in last 2 dc. (30 dc)

Row 5: Ch 2, 2 dc in first dc, dc 2, 2 dc in next dc and mark first of 2 dc just made, *dc 3, 2 dc in next dc and mark first of 2 dc just made; rep from * to last 2 dc, dc 1, 2 dc in last dc. (39 dc)

Row 6: Ch 2, 2 dc in first dc, *dc 1 in each dc to marked st, 2 dc in marked st and move marker to first of 2 dc just made; rep from * 6 more times, dc 1 in each dc to last st, 2 dc in last st. (48 dc)





Row 7: Ch 2, 2 dc in first dc, dc 1 in each st to last dc, moving each marker to st directly above it, 2 dc in last dc. (50 dc)

Row 8: Ch 2, 2 dc in first dc, *dc 1 in each dc to marked st, 2 dc in marked st and move marker to last dc made; rep from * 6 more times, dc 1 in each dc to last dc, 2 dc in last dc. (59 dc)

Row 9: Rep row 7. (61 dc)

Change to B.

Row 10: Rep row 6. (70 dc)

Row 11: Ch 2, 2 camel sts in first dc, camel st in each st to last dc, moving each marker to st directly above it, 2 camel sts in last dc, turn. (72 dc)

Change to A.

Row 12: Rep row 8. (81 dc)

Row 13: Rep row 11. (83 dc)

Change to B.

Row 14: Rep row 6. (92 dc)

Row 15: Rep row 11. (94 dc)

Change to A.

Row 16: Rep row 8. (103 dc)

Row 17: Ch 2, 2 dc in first dc, dc 1 in each dc to last dc, moving each marker to st directly above it, 2 dc in last dc, turn. (105 dc)

Rows 18 and 19: Rep row 6. (123 dc)

Row 20: Ch 2, 2 dc in first dc, *dc 1 in each dc to marked st, [1 dc, ch 3, 1 dc] in marked st, remove marker; rep from * 6 more times, dc 1 in each dc to last dc, 2 dc in last dc, turn. (132 dc and 7 ch-3 sps)

Lattice portion

Row 21: Ch 1, sc 1 in first 2 dc, [*ch 3, skip next dc, sc 1 in next dc; rep from * to 2 dc before ch-3 sp, skip 2 dc, sc 1 in ch-3 sp] 7 times, work from * to * to last dc, sc 1 in last dc, turn. (64 sps)

Row 22: Ch 1, sc 1 in first sc, ch 1, *sc 1 in next sp, ch 3; rep from * to end, ch 1, sc 1 in last sc, turn. (65 sps)

Row 23: Ch 1, 2 sc in first sc, *ch 3, sc 1 in next sp; rep from * to end, ch

3, 2 sc in last sc, turn. (66 sps)

Row 24: Rep row 22. (67 sps)

Shell portion

Row 25: Ch 3 (counts as 1 dc), 3 dc in first sp, *sc 1 in next sp, 5 dc in next sp; rep from * to last ch-3 sp, sc 1 in next sp, 3 dc in last ch-1 sp, dc 1 in last sc, turn. (34 shells and 33 sc)

Change to B.

Row 26: Ch 4, skip 3 ch (counts as 1 dc), 3 dc in next ch, skip 1 dc, sc 1 in next dc, *5 dc in next sc; sc 1 in 3rd dc of next 5-dc shell; rep from * to last sc, 5 dc in next sc, skip 2 dc, sc 1 in next dc, 4 dc in 3rd ch of beg ch-3 of previous row, turn. (35 shells and 34 sc)

Lattice portion

Change to A.

Row 27: Ch 1, sc 1 in first dc, ch 1, sc 1 in next dc, *ch 3, sc 1 in next sc, ch 3, sc in 3rd dc of next 5-dc shell; rep from * to last 4 dc, skip 2 dc, sc 1 in next dc, ch 1, sc 1 in last dc, turn. (70 sps)

Rows 28–30: Rep rows 22–24. (73 sps)

Rep rows 25–30 once more. (79 sps)

Rep rows 25 and 26 once more. (41 shells and 40 sc)

Fasten off .

Edging

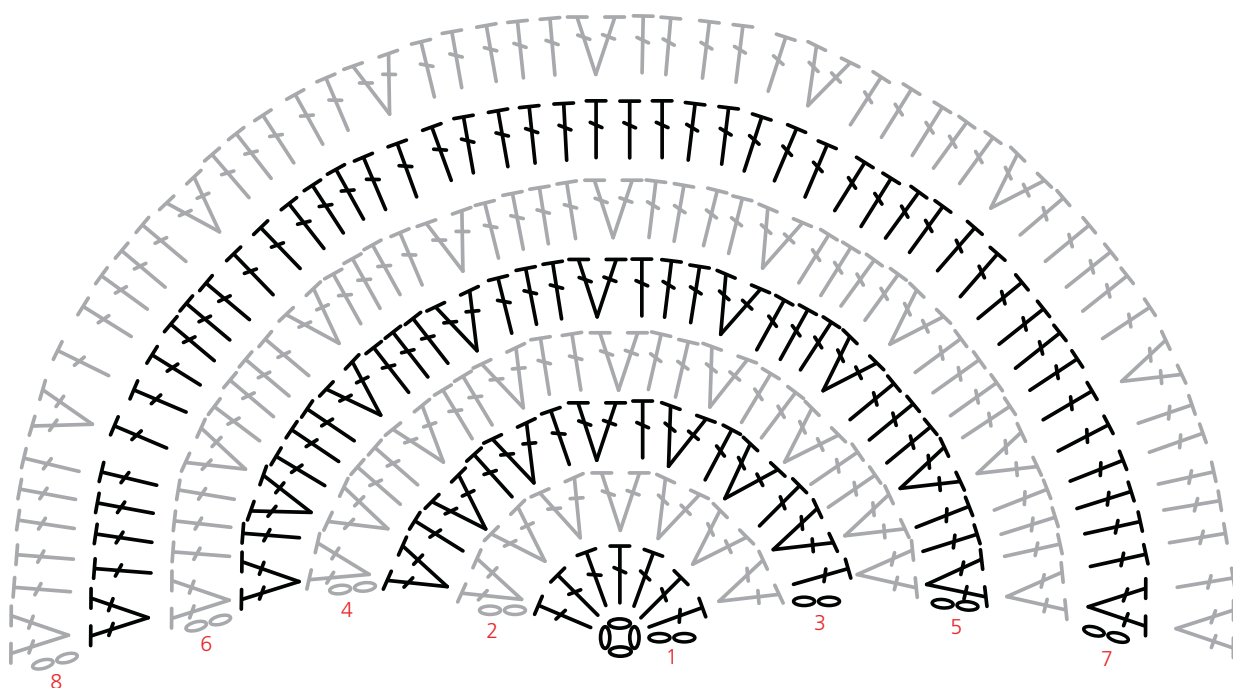
With RS facing and A, join yarn with sl st to first st in upper right corner, sc in each dc and hdc in each sc along the bottom edge to the opposite corner, 2 sc in corner st, sc evenly across top edge to first sc, sc in same st as first sc, join with a sl st to first sc. Fasten off.

Finishing

Weave in ends. Block to measurements. ❤️



Camilla Shawl



Lacy Shawl Collar Sweater



Skill Level

Simple rectangles are joined in an innovative way to create this smart and stylish sweater. Timeless ribbed cuffs complement the lacy diamond stitch pattern on the main fabric for an iconic and versatile look. As fun and easy to make as it is to wear, this design will be a fabulous addition to your wardrobe.

Designed by Marly Bird



Materials

Yarn weight: 

Yarn used: Cosma by Berroco

- 9 (10, 11) skeins Cosma by Berroco, 60% baby alpaca, 30% wool, 10% silk (164 yds/50g) in color 2460

Tools:

- U.S. size F-5 (3.75mm) crochet hook, or size required for gauge
- Stitch markers
- Yarn needle

◆ Yarn Alternatives ◆

Save: Misti Tui by Misti Alpaca
Spend: Villa by Classic Elite Yarns
Splurge: Maai by Shibui

Sizes

Women's Small/Medium (Large/
Extra Large, 2X/3X)

Finished measurements

Length: 26 (28, 30)"

Width (cuff to cuff): 56 (60, 64)"

Stitches used

Single crochet
Double crochet
Treble crochet
Esc (extended sc)

Gauge

3 repeats = 4" (10cm) in lace patt

Special abbreviation

Esc (extended sc): Pull up a loop in indicated st, yo and draw through 1 loop, yo and draw through 2 loops.



Download an easy-to-follow tutorial on how to make the extended sc at LoveofCrochet.com.

Stitch pattern

Lace

Row 1 (RS): Skip 7 ch, sc 1 in 8th ch from hook and in next 2 ch, *ch 5, skip 3 ch, sc 1 in next 3 ch; rep from * to last 2 ch, ch 2, skip next ch, dc 1 in last ch.

Row 2: Ch 1, sc 1 in first dc, skip ch-2 sp, *ch 3, skip 1 st, sc 1 in next st, skip 1 st, ch 3, sc 1 in next ch-sp; rep from * across, sc 1 in 3rd ch of t-ch.

Row 3: Ch 1, sc 1 in first sc, *sc 1 in next ch-sp, ch 5, sc 1 in next ch-sp, sc 1 in next sc; rep from * across.

Row 4: Ch 1, sc 1 in first sc, skip 1 st, *ch 3, sc 1 in next ch-sp, ch 3, skip 1 st, sc 1 in next st, skip 1 st; rep from * to last ch-sp, ch 3, sc 1 in last ch-sp, ch 3, sc 1 in last sc.

Row 5: Ch 6, sc 1 in first ch-sp, sc 1 in next sc, *sc 1 in next ch-sp, ch

5, sc 1 in next ch-sp, sc 1 in next sc; rep from * to last ch-sp, sc 1 in last sp, ch 2, tr 1 in last sc.

Row 6: Ch 1, sc 1 in tr, *ch 3, skip 1 st, sc 1 in next st, skip 1 st, ch 3, sc 1 in next ch-sp; rep from * across.

Rep rows 3–6 for patt, working final row as follows:

Final row: Ch 1, sc 1 in first sc, *sc 1 in next ch-sp, ch 3, sc 1 in next ch-sp, sc 1 in next sc; rep from * across.

PATTERN

Back piece

Ch 198 (216, 234).

Work in lace patt for 74 (86, 94) rows, then work final row of lace patt. Fasten off.

Front piece

Ch 37 (40, 43).

Row 1: Skip 2 ch, esc in 3rd ch from hook and in each ch across. (35 [38, 41] esc)

Row 2: Ch 2 (does not count as a st), esc in each st across.



Rep row 2 until piece measures 64 (69, 74)".
Fasten off.

Finishing

Block pieces to measurements.

Cuffs

Pm at right and left edges of back piece, 12 (13, 14)" below top edge.
Ch 32.

Row 1 (RS): Sc 1 in 2nd ch from hook and in each ch across. (31 sc)

Rows 2 and 3: Ch 1, sc 1 in blo of each st across.

Row 4: Ch 3 (counts as 1 dc), dc 1 in each st across.

Row 5: Ch 1, sc 1 in each st across.

Rep rows 2–5 until piece measures 9¾ (10½, 11¼)".

Fasten off.

Sew right edge of cuff to top 12 (13, 14)" at left edge of back piece (marked), easing in extra fabric from back piece.

Sew cuff seam (foundation row of cuff to top row of cuff).

Work other cuff in same manner, joining to right edge of back piece.

Assembly

With RS facing, pm at one long edge of front piece, one 14 (15, 16)" below top edge, and one 14 (15, 16)" above foundation row.

Sew bottom 14 (15, 16)" of front piece to bottom 14 (15, 16)" at right edge of back piece.

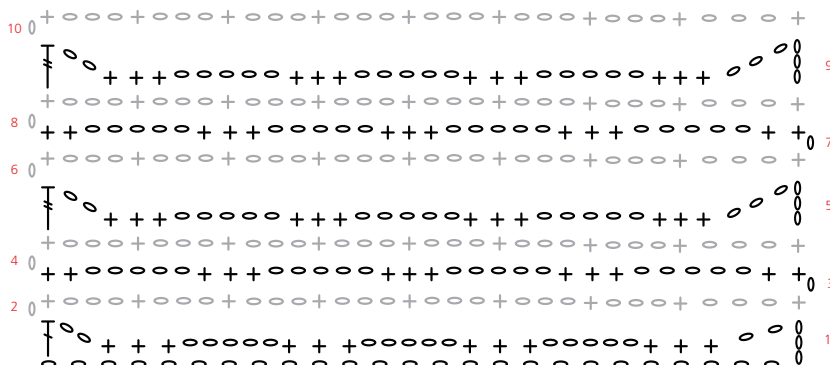
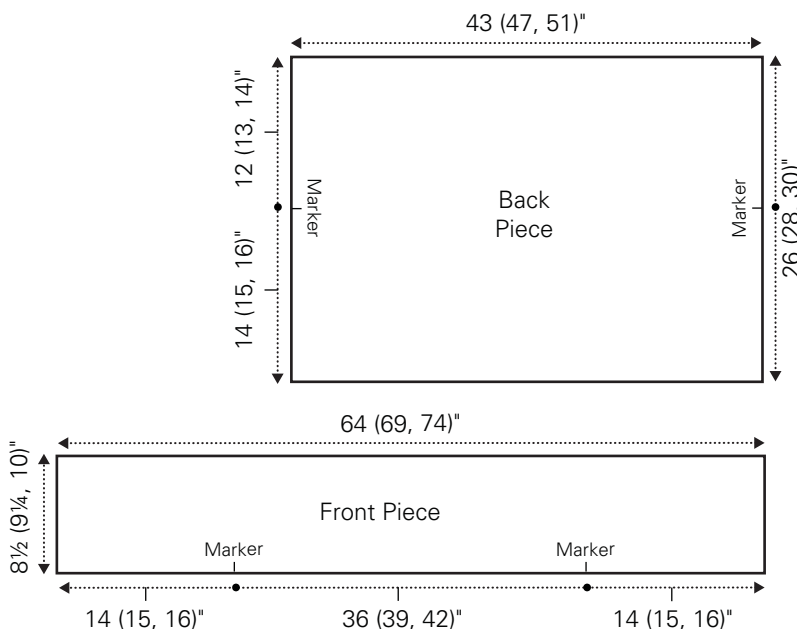
Sew top 14 (15, 16)" of front piece to bottom 14 (15, 16)" at left edge of back piece.

Sew rem 36 (39, 42)" at left edge of front piece to top edge of back piece, easing in extra fabric from back piece.

Weave in ends. ❤️



Lacy Shawl Collar Sweater



get the
**Beaded Box
Stitch Shawl Kit**

bit.ly/Beaded-Wrap-Kit



This kit includes the essentials you need to make a unique crochet shawl, plus the full digital issue of Love of Crochet Summer 2015!

See more at interweavestore.com

Lizbeth

Premium thread for all needle arts!

✳ **Sizes: 10, 20, 40, 80**
in 189 colors

✳ **100% Egyptian
Cotton Thread**

✳ **Sizes 3 in 91 colors**

✳ **Colorfast!**

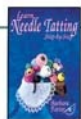
From the book
"Amigurumi Two!"
by Ana Paula Rimoli

Lizbeth



**Thread
Holder**

Keep thread clean,
neat, and handy!



**Learn Needle Tatting
Step-by-Step!**



Beautiful, Versatile,
Easy to Master!



Handy Hands, Inc.
578 N 1800 E • Paxton, IL 60957
www.hhtatting.com • Ph: (217) 379-3802 • M-F 9-5 CT





Hexagon Motif Scarf



Skill Level

Inspired by a vintage afghan, simple-to-crochet hexagonal motifs form this easy summer scarf in a cool silk blend yarn. The vibrant self-striping yarn accents each round to create dazzling pools of color that make each hexagon unique. Just one skein is needed, or use more to make a longer scarf or even a shawl!

Designed by Amy Polcyn

Materials

Yarn weight: 4

Yarn used: Tangier by Cascade Yarns

- 1 skein Tangier by Cascade Yarns, 50% silk, 17% acrylic, 17% rayon, 16% cotton (220 yds/100g) in color 06

Tools:

- U.S. size I-9 (5.5mm) crochet hook, or size required for gauge
- Yarn needle

◆ Yarn Alternatives ◆

Save: Souk by Cascade Yarns

Spend: Seda Rustica by Knit One Crochet Too

Splurge: Silk Garden by Noro

Finished measurements

5½" wide x 55" long

Stitches used

Single crochet
Double crochet

Gauge

1 motif = 5½" (14cm) diameter

Note

Stitches are worked between the stitches from the previous row, not in them, unless otherwise noted.

PATTERN

Motif (make 10)

Ch 4, join with sl st to form a ring.

Rnd 1: Ch 3 (counts as dc, here and throughout), 11 dc in ring. (12 dc)

Rnd 2: Sl st between 2 dc, ch 3, dc 1 in same sp, *2 dc between 2 dc; rep from * around, join with sl st. (24 dc)

Rnd 3: Sl st between 2-dc groups, ch 3, 2 dc in same sp, *3 dc between 2-dc groups; rep from * around, join with sl st. (36 dc)

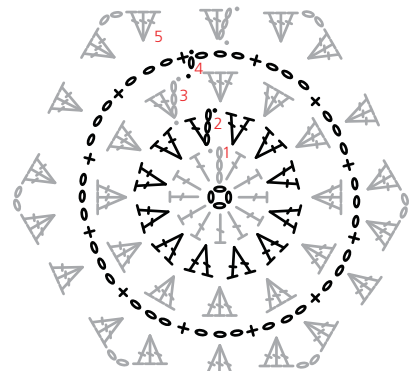
Rnd 4: Sl st between 3-dc groups,

ch 1, sc 1 in same sp, ch 3, *sc 1 between 3-dc groups, ch 3; rep from * around, join with sl st. (12 ch-3 sp)
Rnd 5: Sl st in previous ch-3 sp, ch 3, 2 dc in same sp, [3 dc, ch 2, 3 dc] in next ch-3 sp, *3 dc in next ch-3 sp, [3 dc, ch 2, 3 dc] in next ch-3 sp; rep from * around, join with sl st. Fasten off.

Finishing

Sew motifs together end to end. Weave in ends. Block lightly. ♥

Hexagon Motif Scarf





Roly Poly Hedgehog

✿✿☼☼
Skill Level

This sweet little hedgehog can't wait to snuggle up under a warm blanket when the weather gets chilly. His cute face is full of charming details, and his quills are crocheted at the end, using surface slip stitches and chains. For children under the age of three, you can apply French knots for eyes to make your hedgehog baby safe!

Designed by Megan Kreiner of MK Crochet/MK Knits

Materials

Yarn weight:  4

Yarn used: Ultra Alpaca by Berroco

- 1 skein Ultra Alpaca by Berroco, 50% wool, 50% alpaca (215 yds/100g) in each of colors 6208 Couscous (A), 6280 Mahogany Mix (B), 6245 Pitch Black (C)

Tools:

- U.S. size G-6 (4mm) crochet hook
- Stitch markers
- 9mm plastic eyes
- Fiberfill
- Yarn needle

◆ Yarn Alternatives ◆

Save: Stockbridge by Valley Yarns

Spind: Kismet by Tahki Yarns

Splurge: Simplinatural by HiKoo

Finished measurements

Approx 6" tall

Stitches used

Single crochet
Half double crochet

Gauge

Gauge is not essential for this project.

Special technique

Adjustable ring: Make a large loop with yarn leaving a 4" tail. With hook, draw the working yarn through the loop; ch 1, follow the pattern instructions from here. Once the first rnd of sts is complete, pull tail snug to close the ring.

PATTERN

Body and head

With A, make a 6-st adjustable ring.

Rnd 1: 2 sc in each st around. (12 sts)

Rnd 2: *Sc 1, 2 sc in next st; rep from * around. (18 sts)

Rnd 3: *Sc 2, 2 sc in next st; rep from * around. (24 sts)

Rnd 4: *Sc 1, 2 sc in next st; rep from * around. (36 sts)

Rnd 5: *Sc 5, 2 sc in next st; rep from * around. (42 sts)

Rnds 6–10: Sc 42.

Rnd 11: *Sc 5, sc2tog; rep from * around. (36 sts)

Rnd 12: Sc 36.

Rnd 13: *Sc 1, sc2tog; rep from * around. (24 sts)

Rnd 14: *Sc 2, sc2tog; rep from * around. (18 sts)

Rnd 15: Sc 18.

Rnd 16: *Sc 1, sc2tog; rep from * around. (12 sts)

Rnd 17: Sc 12.

Rnd 18: *Sc 2, 2 sc in next st; rep from * around. (16 sts)

Rnd 19: Sc 16.

Rnd 20: *Sc 1, 2 sc in next st; rep from * around. (24 sts)

Rnd 21: Sc 24.

Rnd 22: *Sc 1, 2 sc in next st; rep from * around. (36 sts)

Rnd 23: Sc 36.

Rnd 24: *Sc 4, sc2tog; rep from * around. (30 sts)

Rnd 25: Sc 30.

Rnd 26: *Sc 1, sc2tog; rep from * around. (20 sts)

Rnd 27: Sc 20.

Rnd 28: *Sc 3, sc2tog; rep from * around. (16 sts)

Rnd 29: Sc 16.

Stuff body.

Rnd 30: [Sc2tog] 8 times. (8 sts)
Fasten off, leaving a long tail for sewing.

Cheeks

With A, ch 11 loosely.

Rnd 1: Starting in 2nd ch from hook and working in back ridge loops, sc 9, 3 sc in next st. Rotate ch so front loops are facing up. Starting in next st and working in front loops, sc 8, 2 sc in next st. (22 sts).

Rnd 2: 2 hdc in next sc, sl st 8, [2 hdc] in next 3 sc, sc 8, [2 hdc] in next 2 sts. (28 sts)

Rnd 3: [2 hdc] in next 2 sts, sl st 8, [2 hdc] in next 6 sts, sc 8, [2 hdc] in next 4 sts. (40 sts)

Rnd 4: [Sc2tog] 3 times, sl st 6, [sc2tog] 7 times, sc 6, [sc2tog] 4 times. (26 sts)

Fasten off, leaving a long tail for sewing.



Muzzle

With A, make a 4-st adjustable ring.

Rnd 1: *Sc 1, 2 sc in next st; rep from * around. (6 sts)

Rnd 2: *Sc 1, 2 sc in next st; rep from * around. (9 sts)

Rnd 3: *Sc 2, 2 sc in next st; rep from * around. (12 sts)

Rnd 4: *Sc 1, 2 sc in next st; rep from * around. (18 sts)

Rnd 5: *Sc 1, sc2tog; rep from * around. (12 sts)

Fasten off, leaving a long tail for sewing.

Ear (make 2)

With A, make a 6-st adjustable ring. Ch 1 and turn.

Row 1: Skip first ch, sc 6.

Fasten off, leaving a long tail for sewing.

Nose

With C, make a 4-st adjustable ring.

Fasten off, leaving a long tail for sewing.

Foot (make 2)

With A, make a 4-st adjustable ring.

Rnd 1: 2 sc in each st around. (8 sts)

Rnd 2: *Sc 1, 2 sc in next st; rep from * around. (12 sts)

Rnd 3: *Sc 2, 2 sc in next st; rep from * around. (16 sts)

Rnd 4: *Sc 2, sc2tog; rep from * around. (12 sts)

Rnds 5–8: Sc 12.

Stuff.

Rnd 9: *Sc 1, sc2tog; rep from * around. (8 sts)

Rnd 10: [Sc2tog] 4 times. (4 sts)

Fasten off and close opening in back of foot.

Hand and arm (make 2)

With A, make a 6-st adjustable ring.

Rnd 1: [2 sc] in each st around (12 sts)

Rnds 2 and 3: Sc 12.

Rnd 4: *Sc 1, sc2tog; rep from * around. (8 sts)

Stuff.

Rnd 5: *Sc 2, sc2tog; rep from * around. (6 sts)

Rnd 6: *Sc 2, 2 sc in next st; rep from * around. (8 sts)

Rnds 7 and 8: Sc 8.

Stuff.

Rnd 9: *Sc 2, sc2tog; rep from * around. (6 sts)

Flatten seam and sew closed, leaving a long tail for sewing.

Tail

With A, make a 4-st adjustable ring.

Rnd 1: *Sc 1, 2 sc in next st; rep from * around. (6 sts)

Rnds 2 and 3: Sc 6.

Fasten off and stuff lightly before closing opening.

Finishing

Sew open edge of cheeks to lower half of head and stuff before closing seam. Sew muzzle to upper half of cheeks and stuff. Sew nose in place. Attach eyes (draw yarn through rem sts on head and secure) or embroider French knots.

With C, embroider eyebrows, mouth and dimples. Sew ears in place. Attach arms and feet. With C, embroider toes. Sew tail in place. Weave in ends.

Back quills

With B and working in surface sl st on back, join yarn and sl st in next st, *ch 7, sl st in st at base of ch-7 (quill formed), sl st in next st; rep from * to outline quill area, then continue to fill in area as desired. Fasten off. ❤️



Teddy



Skill Level

This sweet teddy bear is perfect for little hands (and not so little hands) to hold and cuddle! His friendly face will make him a loveable pal for a special child in your life.

Designed by Megan Kreiner of MK Crochet / MK Knits

Materials

Yarn weight: 

Yarn used: Soft Yarn by Red Heart

- 1 skein Soft Yarn by Red Heart, 100% acrylic (256 yds/140g) in each of colors Chocolate (A) and Black (B)

Tools:

- U.S. size G-6 (4mm) crochet hook
- Stitch markers
- Yarn needle
- 9mm plastic safety eyes, 2 total
- Fiberfill
- 4" square beige felt
- Sewing needle and thread

◆ Yarn Alternatives ◆

Save: Uptown Worsted by Universal Yarn

Spend: Sateen Worsted by Cascade Yarns

Splurge: Weekend by Berroco

Finished measurements

Approx 5" wide x 9" tall

Stitches used

Single crochet
Half double crochet

Gauge

Gauge is not essential for this project.

Special technique

Adjustable ring: Make a large loop with yarn leaving a 4" tail. With hook, draw the working yarn through the loop; ch 1, follow the pattern instructions from here. Once the first rnd of sts is complete, pull tail snug to close the ring.

PATTERN

Head

With A, ch 7 loosely.

Rnd 1: Starting in 2nd ch from hook and working in back ridge loops, sc 5, 5 sc in next ch. Rotate chain so front loops are facing up. Starting in next st and working in front loops of ch, sc 4, 4 sc in next st. (18 sts)

Rnd 2: 2 sc in next st, sc 4, [2 sc] in next 5 sts, sc 4, [2 sc] in next 4 sts. (28 sts)

Rnd 3: Sc 8, [2 sc] in next 6 sts, sc 8, [2 sc] in next 6 sts. (40 sts)

Rnds 4–8: Sc 40.

Rnd 9: *Sc 2, sc2tog; rep from * around. (30 sts)

Rnd 10: Sc 30.

Rnd 11: *Sc 1, sc2tog; rep from * around. (20 sts)

Rnd 12: Sc 20.

Rnd 13: [Sc2tog] 10 times. (10 sts) Stuff head. Fasten off, leaving a long tail for sewing.

Muzzle

With A, make a 6-st adjustable ring.

Rnd 1: 2 sc in each st around. (12 sts)

Rnd 2: *Sc 1, 2 sc in next st; rep from * around. (18 sts)

Rnd 3: *Sc 1, sc2tog; rep from * around. (12 sts)

Fasten off, leaving a long tail for sewing.

Ear (make 2)

With A, make a 6-st adjustable ring.

Rnd 1: Sl st, sc 4, sl st.

Fasten off, leaving a long tail for sewing.

Nose

With B, make a 5-st adjustable ring. Do not join. Ch 1 and turn.

Row 1: Skip first ch, sl st 5.

Fasten off, leaving a long tail for sewing.

Body

With A, make an 8-st adjustable ring.

Rnd 1: 2 sc in each st around. (16 sts)

Rnd 2: *Sc 3, 2 sc in next st; rep from * around. (20 sts)

Rnd 3: *Sc 1, 2 sc in next st; rep from * around. (30 sts)

Rnds 4–6: Sc 30.

Rnd 7: *Sc 1, sc2tog; rep from * around. (20 sts)

Rnd 8: Sc 20.

Rnd 9: *Sc 3, sc2tog; rep from * around. (16 sts)

Rnds 10 and 11: Sc 16.

Rnd 12: [Sc2tog] 8 times. (8 sts)

Stuff. Fasten off, leaving a long tail for sewing. Do not close hole.

Arms (make 2)

With A, make a 6-st adjustable ring.

Rnd 1: 2 sc in each st around. (12 sts)

Rnds 2 and 3: Sc 12.

Rnd 4: *Sc 2, sc2tog; rep from * around. (9 sts)

Rnds 5–8: Sc 9.

Stuff.

Rnd 9: *Sc 1, sc2tog; rep from * around. (6 sts)

Flatten seam and sew closed, leaving a long tail for sewing.

Legs (make 2)

With A, make a 6-st adjustable ring.

Rnd 1: 2 sc in each st around. (12 sts)

Rnd 2: Sc 3, 2 hdc in next 6 sts, sc 3. (18 sts)

Rnd 3: In blo, sc 2, hdc 14, sc 2. (18 sts)

Rnd 4: Sc 3, hdc 12, sc 3. (18 sts)

Rnd 5: [Sc2tog] 9 times. (9 sts)

Rnds 6–10: Sc 9.

Stuff.

Rnd 11: *Sc 1, sc2tog; rep from * around. (6 sts)

Fasten off, leaving a long tail for sewing.

Tail

With A, make a 4-st adjustable ring.

Rnd 1: 2 sc in each st around. (8 sts)

Rnd 2: [Sc2tog] 4 times. (4 sts)

Do not stuff.

Finishing

Sew muzzle to head, adding additional stuffing if needed.

Sew nose to muzzle. Attach eyes before closing top of head. With B, embroider eyebrows.

Sew ears in place, sew head to open end of body. Sew arms, legs, and tail in place. Weave in ends.

Cut patches from felt using templates. Sew in place on body as shown. ❤️



WHAT'S MISSING? YOUR AD!

For more information contact,

DIANE KOCAL

at 317-482-0120

OR Diane.Kocal@fwcommunity.com

or

SALLY FINNEGAN

at 513-403-9565

OR Sally.Finnegan@fwcommunity.com



3-in-1 Craft Floor Lamp

OttLite®

**Turn on
your
Inspiration!**

Only OttLite gives you true colors, clear details and reduced glare and eyestrain — all in a low heat, energy efficient bulb to help you do what you love, longer.

Select yarn colors with complete confidence. Crochet for hours and never miss a stitch. When you can see every color true to life and detail clearly, just imagine where your creativity can take you.

Now that's inspiring!



OttLite.com

learn to
KNOOK
♥

Fall Swatch-cloth



Skill Level

With knooking, you can make a knitted pattern with a handy crochet hook! Practice the knit and purl stitches by making this easy swatch, then let your imagination run wild after you perfect this fun technique. You just might discover your new fiber obsession.

Designed by Jennifer Burt

Materials

Yarn weight: 

Yarn used: Modern Cotton by Berroco

- 1 skein Modern Cotton by Berroco, 60% cotton, 40% rayon/viscose (209 yds/100g) in color 1636 Meadow Lark

Tools:

- U.S. size G-6 (4mm) knooking hook, or size required for gauge
- Yarn needle

Yarn Alternatives

Save: Catania Grande by Schachenmayr

Spend: Pima Kuri by Mirasol

Splurge: DungaEASE by Knit One Crochet Too

Finished measurements

Approx 7" x 8"

Stitches Used

Knit
Purl

Gauge

16 sts = 4" (10cm) in patt

PATTERN

Ch 29.

Row 1: Pick up and knit 28 sts.

Border

Rows 2–7: Knit 28.

Body

Row 1: Knit 3, purl 22, knit 3.

Rows 2, 4, 6, 8, and 10: Knit 28.

Rows 3, 5, 7, and 9: Knit 3, purl 22, knit 3.

Row 11: Knit 3, purl 7, knit 8, purl 7, knit 3.

Row 12: Knit 10, purl 8, knit 10.

Rows 13, 15, 17, 19, 21, 23, and 25:

Knit 3, purl 7, knit 8, purl 7, knit 3.

Rows 14, 16, 18, 20, 22, 24, and 26:

Knit 10, purl 8, knit 10.

Rows 27, 29, 31, 33, and 35: Knit 3, purl 22, knit 3.

Rows 28, 30, 32, 34, and 36: Knit 28.

Ending border

Rows 1–7: Knit.

Row 8: Knit bind off.

Finishing

Weave in ends. Block. ♥





Tri-color Bulky Cowl



Skill Level

Three yarns held together create the plush texture and tweedy look on this chunky cowl. You'll finish this fun and easy project in a flash thanks to a supersized hook, so it's perfect for a quick gift or last-minute accessory. Have fun experimenting with different color combinations to make a cowl for all your favorite outfits.

Designed by Marly Bird

Materials

Yarn weight: 

Yarn used: Pure Wool Worsted by Rowan

- 1 skein Pure Wool Worsted by Rowan, 100% superwash wool (219 yds/100g) in each of colors Granite (A), Moonstone (B), Bottle (C)

Tools:

- U.S. size Q-19 (15.75mm) crochet hook, or size required for gauge
- Yarn needle

• Yarn Alternatives •

Save: Wool of the Andes by Knit Picks

Spend: 220 by Cascade Yarns

Splurge: Classic Wool by Patons

Finished measurements

32" circumference x 11" deep

Stitches used

Double crochet

Gauge

6½ dc = 4" (10cm)

Note

Hold one strand of each color tog throughout.

PATTERN

With one strand of each color held tog, ch 20.

Row 1: Dc 1 in 3rd ch from hook and in each ch across, turn. (18 sts)

Row 2: Ch 2, dc 1 in blo of each st across, turn.

Rep row 2 until piece measures 32". Fasten off.

Finishing

Sew short ends tog. Weave in ends. Block. ♥





Where creativity is homegrown

ALL NEW
video & kit
series
from CATHE HOLDEN
and F+W

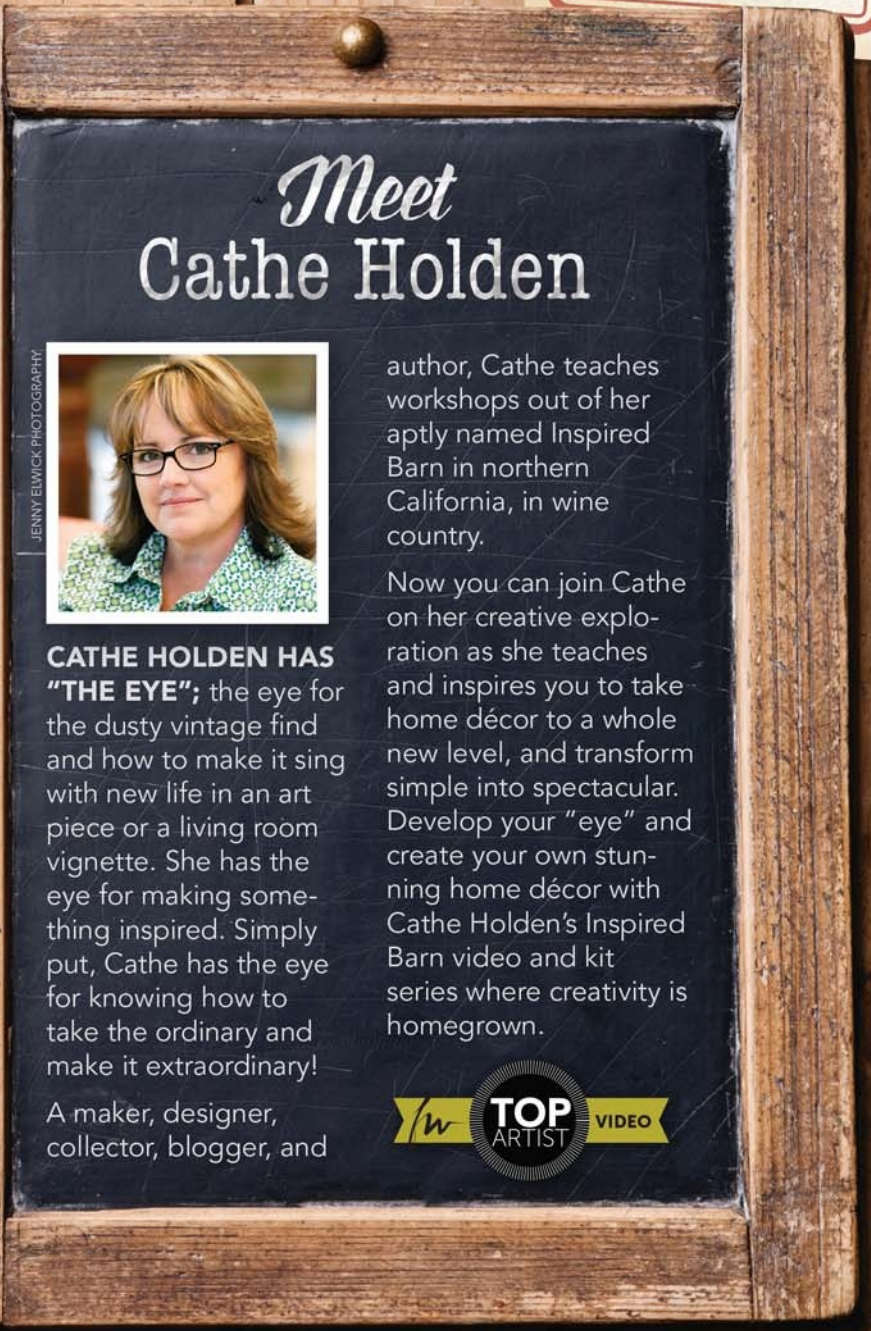
CLEVER WALL HOOK



TRAY & COASTERS



BAY LAUREL MIRROR



Meet Cathe Holden



JENNY ELWICK PHOTOGRAPHY

author, Cathe teaches workshops out of her aptly named Inspired Barn in northern California, in wine country.

Now you can join Cathe on her creative exploration as she teaches and inspires you to take home décor to a whole new level, and transform simple into spectacular. Develop your "eye" and create your own stunning home décor with Cathe Holden's Inspired Barn video and kit series where creativity is homegrown.

CATHE HOLDEN HAS "THE EYE"; the eye for the dusty vintage find and how to make it sing with new life in an art piece or a living room vignette. She has the eye for making something inspired. Simply put, Cathe has the eye for knowing how to take the ordinary and make it extraordinary!

A maker, designer, collector, blogger, and



 **SHOP CATHE'S VIDEOS + KITS**
interweavestore.com/cathe-holden

We are super excited about our new partnership with **Cathe Holden** and can't wait for you to see her new cross-crafting kits. We know you will love her kits as much as we do. Be sure to stop by the Interweave Store for more details — Happy Crafting!

Jennifer

{ interweavestore.com/cathe-holden }



Mixed Media Pillow Collage

Utilizing fabric paint and fusible/printable fabric combined with sewing notions and craft supplies, Cathe takes mixed media collage design to a softer level with a decorated fabric panel.

THE KIT Cathe supplies the vintage ephemera images to download and print for this project, but you can also utilize your own scanned images or digital photographs for an even more personalized design.

THE TECHNIQUE Learn the process of layering multiple elements and stitchings, (both hand and machine), as well as overall composition balance through design and color.

THE VISION The Mixed Media Collage Pillow is a fantastic go-to project for gifting. Craft as host or housewarming gifts, or utilize personal photographs and printed material such as an invitation or announcement to make the perfect wedding or new baby present.



Wall Hook Assemblage

Decorate a rustic pallet wood canvas with hand-distressed vintage ephemera images and a combination of techniques including painted and metallic-embossed stenciling, prize ribbon construction that incorporates beading, and the gold-leafing of hardware. The entire piece is handcrafted with spectacular results that can only come from combining such contrasting elements.

THE KIT Add gold-leafing and metallic embossing to your bag of tricks when working with mixed media projects. This project is a great example of how shiny metal creates just the right amount of punch in a collage.

THE TECHNIQUE Use sandpaper rather than scissors or a craft knife to trim away excess (dried) découpaged paper from the edges of wood and other surfaces for a softer, worn look.

THE VISION This project is meant to encourage crafting art pieces as functional home décor furnishings. This assemblage piece was enhanced and made for use by simply attaching coat hook hardware.



Wall Pocket

Let style and function combine with this Reverse Canvas Wall Pocket kit. Easily recreated in various sizes, allowing elements to be attached on a whim, the pocket is adorned with photos and images and can house anything from stationery to gift wrap supplies.

THE KIT Printing images and text to fabric adds new dimension to your craft supplies and projects.

THE TECHNIQUE Learn how faux-stitching can open up so many possibilities for the hard-to-work-with areas of your assemblage pieces. Discover how to stencil with a multitude of color choices using a simple, inexpensive watercolor paint set, which is also utilized to color the dimensional hand-crafted tattered fabric rose.

THE VISION I encourage looking at household, vintage, and craft supply goods with a completely different view. A wood-frame stretched canvas is primarily designed for painting, but turned around backwards it can become a shadowbox-style pocket!



Lace Panel Infinity Cowl



The delicate lace panel on this graceful cowl accents the easy treble crochet stitches on the main fabric. Fine wool and silk yarn makes it a luxurious accessory you can wear with your favorite dresses, or pair it with a casual tee to spruce up an everyday outfit.

Designed by Rebecca Velasquez

Materials

Yarn weight:

Yarn used: Whisper Lace by Fibra Natura

- 2 skeins Whisper Lace by Fibra Natura, 70% wool, 30% silk (440 yds/50g) in color 104 Fog

Tools:

- U.S. size F-5 (3.75mm) crochet hook, or size required for gauge
- Yarn needle

Yarn Alternatives

Save: Wisp by Dream in Color
Spend: Zephyr by Jagerspun
Splurge: Merino Silk Lace by SweetGeorgia

Finished measurements

86" circumference x 12" deep, after blocking

Stitches used

Single crochet
Double crochet
Treble crochet
Cluster sts

Gauge

19 tr and 6 rows = 4" (10cm)

Special abbreviation

Cl (cluster): * [Yo] twice, insert hook in indicated st, yo and pull up a loop, [yo and draw through 2 loops on hook] twice; rep from * twice, yo, draw through rem loops on hook.

PATTERN

Lace panel

Row 1: Ch 66, dc 1 in 4th ch from hook and in each ch to end, turn.

Row 2: Ch 1, sc 1 in first dc, *ch 4, skip 2 dc, sc 1 in next dc; rep from * across, turn.

Row 3: Ch 5, sc 1 in first ch-4 sp, *ch 4, sc 1 in next ch-4 sp; rep from * across, ending with ch 2, dc 1 in last sc.

Row 4: Ch 1, sc 1 in first dc, ch 3, skip (ch 2, 1 sc, ch-4 sp, 1 sc), *[cl,

ch 3] 4 times in next ch-4 sp**, skip (sc, ch 4, sc), sc 1 in next ch-4 sp, ch 3, skip (sc, ch 4, sc); rep from * across, ending last rep at **, skip (ch-4, sc), sc 1 in 3rd ch of t-ch, turn.

Row 5: Ch 7, skip (first sc, ch 3, cl), *sc 1 in next ch-3 sp, ch 4, [1 sc, ch 4, 1 sc] in next ch-3 sp, ch 4, sc 1 in next ch-3 sp**, ch 5, skip (ch 3, sc, ch 3, cl); rep from * across, ending last rep at **, ch 3, skip ch-3 sp, tr 1 in last sc, turn.

Row 6: Ch 1, sc 1 in tr, ch 4, skip ch-3 sp, sc 1 in next ch-4 sp, [ch 4, 1 sc in next ch-4 sp] twice, ch 4, sc 1 in next ch-5 sp, *[ch 4, 1 sc in next ch-4 sp] 3 times, ch 4, sc 1 in next ch-5 sp; rep from * across, ending with sc 1 in 4th ch of t-ch, turn.

Row 7: Rep row 3.

Row 8: Ch 5, [cl, ch 3] twice in ch-2 sp, skip (1 sc, ch 4, 1 sc), sc 1 in next ch-4 sp, *skip (sc, ch-4, sc), [ch 3, cl] 4 times in next ch-4 sp, skip (1 sc, ch 4, 1 sc), ch 3, sc 1 in next ch-4 sp**; rep from * across, ending with **, ch 3, skip next ch-4 sp, [cl, ch 3, cl, ch 1, 1 tr] in final ch-5.

Row 9: Ch 4, sc 1 in ch-1 sp, ch 4, sc 1 in next ch-3 sp, *ch 5, skip (ch 3, 1 sc, ch 3, cl), sc 1 in next ch-3 sp, ch 4**, [1 sc, ch 4, 1 sc] in next ch-3 sp, ch 4, sc 1 in next ch-3 sp; rep from * across, ending with **, skip cl, sc 1 in next ch-1 sp, ch 2, hdc 1 in 2nd ch of t-ch, turn.

Row 10: Ch 1, sc 1 in hdc, ch 4, skip (ch 2, sc), sc 1 in next ch-4 sp, *ch 4, sc 1 in ch-5 sp**, [ch 4, 1 sc in next ch-4 sp] 3 times; rep from * across, ending with **, [ch 4, 1 sc in next ch-4 sp] twice, turn.

Rows 11–42: Rep rows 3–10.

Rows 43–47: Rep rows 3–7.

Row 48: Ch 3, sc 1 in first ch-4 sp, *ch 2, sc 1 in next ch-4 sp; rep from * across, ending with ch 1, hdc 1 in last sc, turn.

Solid panel

Row 49: Ch 3 (counts as dc), dc 1 in next ch, *dc 1 in next sc, dc 1 in each of next 2 ch; rep from * across, ending with dc 1 in last ch 1, dc 1 in 2nd ch of t-ch, turn.

Row 50: Ch 4 (counts as tr, here to end), tr 1 in next dc and in each dc across, turn.

Row 52: Ch 4, tr 1 in each tr across, turn.

Rows 53–120: Rep row 52.

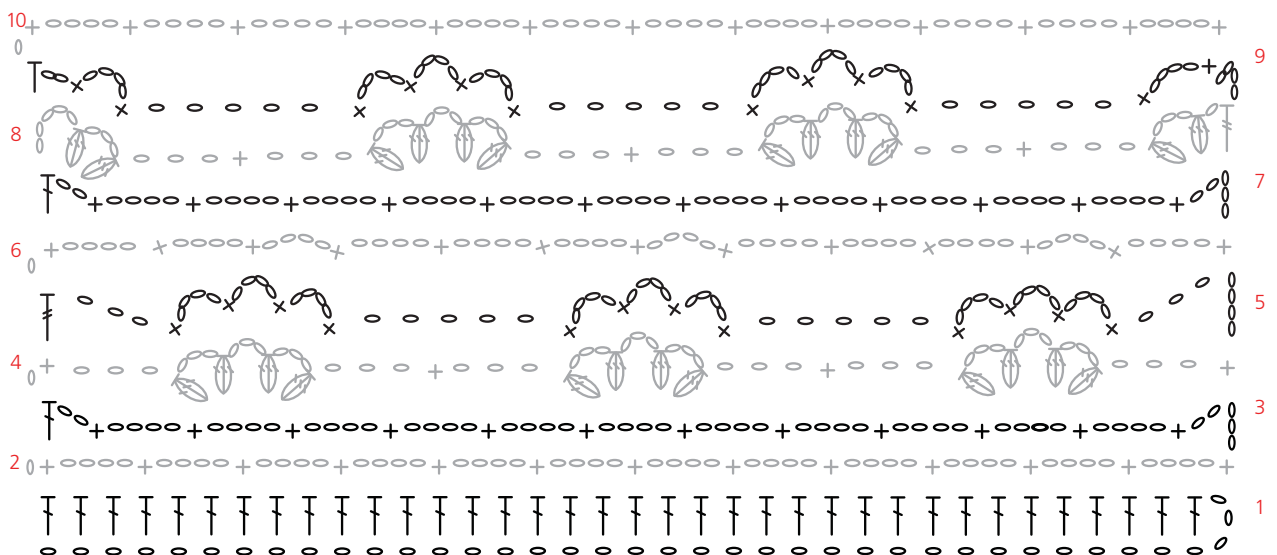
Being careful not to twist scarf, with RS tog, bring beg foundation edge to meet last row, ch 1, sl st through both loops of each row to join, fasten off.



Finishing

Weave in ends. Block. ❤️

Lace Panel Infinity Cowl





Claim your FREE PREVIEW ISSUE TODAY!

EACH ISSUE OFFERS:

- 20+ projects for garments, accessories, gifts & home décor
- Expert tips & techniques
- Easy-to-follow instructions
- The latest trends on colors, yarns and more!

Love of Crochet will inspire you with dozens of projects, skill-building techniques, and step-by-step instructions with big, beautiful photos and diagrams! Request your **FREE PREVIEW ISSUE** and see all the creativity and fun we pack in every issue!

Don't wait!

www.LoveofCrochet.com/FreeIssue or call 855-309-6638

Mosaic Jacket



Skill Level

Get the vintage style we all know and love with this smart jacket. The gorgeous mosaic pattern on the sleeves, hem, and collar add a colorful and impressive detail to the classic shaping and neutral color of the body, crafting a true period piece.

Designed by Melissa Leapman



Materials

Yarn weight: 

Yarn used: Ultra Alpaca Light by Berroco

- 2 (2, 2, 2, 3) skeins Ultra Alpaca Light by Berroco, 50% super fine alpaca, 50% Peruvian wool (144 yds/50g) in color 4282 Boysenberry Mix (A)
- 2 (2, 2, 2, 2) skeins 4283 Lavender Mix (B)
- 5 (6, 6, 7, 7) skeins 4214 Steel Cut Oats (C)

Tools:

- U.S. size H-8 (5mm) crochet hook, or size required for gauge
- U.S. size F-5 (3.75mm) crochet hook
- ¾" - 1" buttons, 5 total
- Yarn needle

◆ Yarn Alternatives ◆

Save: Baby Alpaca Cherish by Plymouth Yarns

Spend: Serena by Manos del Uruguay

Splurge: Rylie by HiKoo

Sizes

Women's Small (Medium, Large, Extra Large, 2X)

Finished measurements

Bust: 35½ (37½, 44½, 25¼, 53½)"
Length: 17½ (18, 18½, 19, 19)"

Stitches used

Single crochet
Half double crochet
Double crochet

Gauge

14 sts and 12 rows = 4" (10cm) in solid hdc patt using larger hook

Stitch patterns

Mosaic

Foundation row 1 (RS): With A, sc 1 in second ch from hook and in each ch across, turn.

Foundation row 2: Ch 1, sc 1 in each sc across, turn.

Row 1 (RS): Change to B, ch 1, sc 1 in first sc, *ch 2, skip next sc, sc 1 in next sc, ch 2, skip next sc, sc 3, ch 2, skip next sc, sc 1 in next sc; rep from * across, ending with ch 2, skip next sc, sc 1 in last sc, turn.

Row 2: Ch 1, sc 1 in first sc, *ch 2, skip next ch-2 sp, sc 1 in next sc, ch 2, skip next ch-2 sp, sc 3, ch 2, skip next ch-2 sp, sc 1 in next sc; rep from * across, ending with ch 2, skip next ch-2 sp, sc 1 in last sc, turn.

Row 3: Change to A, ch 1, sc 1 in first sc, *dc 1 in next st 3 rows below, sc 1 in next sc, dc 1 in next sc 3 rows below, ch 2, skip next sc, sc 1 in next sc, ch 2, skip next sc, dc 1 in next st 3 rows below, sc 1 in next sc; rep from * across, ending with dc 1 in next st 3 rows below, sc 1 in last sc, turn.

Row 4: Ch 1, sc 4, *ch 2, skip next ch-2 sp, sc 1 in next sc, ch 2, skip next ch-2 sp, sc 5; rep from * across, ending with ch 2, skip next ch-2 sp, sc 1 in next sc, ch 2, skip next ch-2 sp, sc 4, turn.

Row 5: Change to B, ch 1, sc 1 in first sc, *ch 2, skip next sc, sc 2, dc 1 in next st 3 rows below, sc 1 in next sc, dc 1 in next st 3 rows below, sc 2; rep from * across, ending with ch 2, skip next sc, sc 1 in last sc, turn.

Row 6: Ch 1, sc 1 in first sc, ch 2, skip next ch-2 sp, *sc 7, ch 2, skip next ch-2 sp; rep from * across, ending with sc 1 in last sc, turn.

Row 7: Change to A, ch 1, sc 1 in first sc, *dc 1 in next st 3 rows below, [ch 2, skip next sc, 1 sc in next sc] 3 times, ch 2, skip next sc;

rep from * across, ending with dc 1 in next st 3 rows below, sc 1 in last sc, turn.

Row 8: Ch 1, sc 2, *ch 2, skip next ch-2 sp, sc 1 in next st; rep from * across, ending with sc 1 in last sc, turn.

Row 9: Change to B, ch 1, sc 1 in first sc, *ch 2, skip next sc, [1 dc in next st 3 rows below, 1 sc in next sc] 3 times, dc 1 in next st 3 rows below; rep from * across, ending with ch 2, skip next sc, sc 1 in last sc, turn.

Row 10: Ch 1, sc 1 in first sc, ch 2, skip next ch-2 sp, *sc 7, ch 2, skip next ch-2 sp; rep from * across, ending with sc 1 in last sc, turn.

Row 11: Change to A, ch 1, sc 1 in first sc, *dc 1 in next st 3 rows below, sc 2, ch 2, skip next st, sc 1 in next st, ch 2, skip next sc, sc 2; rep from * across, ending with dc 1 in next st 3 rows below, sc 1 in last sc, turn.

Row 12: Ch 1, sc 4, *ch 2, skip next ch-2 sp, sc 1 in next sc, ch 2, skip next ch-2 sp, sc 5; rep from * across, ending with ch 2, skip next ch-2 sp, sc 1 in next sc, ch 2, skip next ch-2 sp, sc 4, turn.

Row 13: Change to B, ch 1, sc 1 in first sc, *ch 2, skip next st, sc 1 in next sc, ch 2, skip next sc, dc 1 in next st 3 rows below, sc 1 in next st, dc 1 in next st 3 rows below, ch 2, skip next st, sc 1 in next sc; rep from * across, ending with ch 2, skip next sc, sc 1 in last sc, turn.

Row 14: Ch 1, sc 1 in first sc, ch 2, skip next ch-2 sp, *sc 1 in next sc, ch 2, skip next ch-2 sp, sc 3, ch 2, skip next ch-2 sp, sc 1 in next st, ch 2, skip next ch-2 sp; rep from * across, ending with sc 1 in last sc, turn.

Row 15: Change to A, ch 1, sc 1 in first sc, *dc 1 in next st 3 rows below, sc 1 in next st, dc 1 in next st 3 rows below, sc 3, dc 1 in next st 3 rows below, sc 1 in next st; rep from * across, ending with dc 1 in next st 3 rows below, sc 1 in last sc, turn.

Row 16: Ch 1, sc 1 in each st across. Fasten off.



Cont in patt until piece measures approx 14 (14½, 15, 15½, 15½)" from beg, ending with a RS row.

Shape neck

Next row (WS): Sl st in first 9 (5, 9, 5, 9) sts, ch 2, cont in patt to end. Ch 2, turn.

Next row: Work across until 4 sts rem. Do not ch 2. Turn, leaving rest of row unworked.

Next row: Sl st in first 4 sts, ch 2, cont in patt to end. Ch 2, turn.

Next row: Work across until 2 sts rem. Ch 2, turn, leaving rest of row unworked.

Dec 1 st at neck edge once. (10 [12, 14, 16, 18] sts rem)

Cont even until piece measures approx 17½ (18, 18½, 19, 19)" from beg. Fasten off.

Place markers for 4 evenly spaced buttons, making the first ¾" from beg of front neck shaping and the last ¾" from the lower edge.

Right front

Work as for left front, reversing all shaping and making buttonholes opposite markers on RS rows as follows: Work 3 sts in patt, ch 2, skip next 2 sts, work across to end. On next row, work 2 sts in ch-2 sp of the previous row.

Sleeves

With smaller hook and A, ch 44 (52, 52, 60, 60).

Beg mosaic patt, and work even on 43 (51, 51, 59, 59) sts until row 16 of patt is completed.

Change to larger hook and C, beg solid hdc patt, and work even on 43 (51, 51, 59, 59) sts until piece measures approx 10" from beg, ending with a WS row. Do not ch 2. Turn.

Shape cap

Next row (RS): Sl st in first 4 (6, 8, 9, 10) sts, ch 2, cont in patt to end

Solid hdc

Row 1: Ch 2 (counts as first hdc here and throughout), hdc 1 in each st across, hdc 1 in top of t-ch, turn

Rep row 1 for patt.

Notes

Work all dc in front of ch-2 spaces. Throughout, each hdc, sc, dc, hdc2tog, and t-ch counts as 1 st. To decrease 1 st each side, ch 2 to turn; skip first st, work hdc2tog to combine next 2 sts; cont in patt until 3 sts rem, ending row with hdc2tog to combine next 2 sts, hdc in top of turning ch-2.

PATTERN

Back

With smaller hook and A, ch 60 (68, 76, 84, 92).
Beg mosaic patt, and work even on 59 (67, 75, 83, 91) sts until row 16 of patt is completed.

Change to larger hook and C, beg solid hdc patt, and work even on 59 (67, 75, 83, 91) sts until piece measures approx 10" from beg, ending with a WS row. Do not ch 2. Turn.

Shape armholes

Next row (RS): Sl st in first 4 (6, 8, 9, 10) sts, ch 2, cont in patt until 3 (5, 7, 8, 9) sts rem. Do not ch 2. Turn, leaving rest of row unworked.

Next row: Sl st in first 3 (3, 3, 4, 5) sts, ch 2, cont in patt until 2 (2, 2, 3, 4) sts rem. Ch 2, turn.
Dec 1 st each side every row twice. (45 [49, 53, 57, 61] sts rem)

Cont in patt until piece measures approx 17½ (18, 18½, 19, 19)" from beg. Fasten off.

Left front

With smaller hook and A, ch 36 (36, 44, 44, 52).
Beg mosaic patt, and work even on 35 (35, 43, 43, 51) sts until row 16 of patt is completed.

Change to larger hook and C, beg solid hdc patt, and work even on 35 (35, 43, 43, 51) sts until piece measures approx 10" from beg, ending with a WS row. Do not ch 2. Turn.

Shape armhole

Next row (RS): Sl st in first 4 (6, 8, 9, 10) sts, ch 2, cont in patt to end. Ch 2, turn.

Next row: Work across until 2 (2, 2, 3, 4) sts rem. Ch 2, turn.

Dec 1 st at armhole edge every row twice. (28 [26, 32, 30, 36] sts rem)

until 3 (5, 7, 8, 9) sts rem. Ch 2, turn, leaving rest of row unworked.

Dec 1 st each side every other row 4 (4, 7, 6, 7) times, then every row 3 (5, 0, 4, 2) times. (23 sts rem)

Next row: Sl st in first 4 sts, ch 2. Skip st where last sl st was worked, cont in patt until 3 sts rem. Do not ch 2. Turn, leaving rest of row unworked.

Next row: Rep last row. (11 sts rem) Fasten off.

Finishing

Sew shoulder seams, leaving center 25 sts open at back of neck.

Set in sleeves. Sew side and sleeve seams.

Collar

With RS facing, smaller hook, and A, beg at right front neck edge, and work 75 sc evenly spaced along neckline.

Work foundation row 2 of mosaic patt, then work rows 1–16 of mosaic patt, working a buttonhole 3 sts in (as before) approximately 1¾" from beg of collar. Fasten off.

Front edging

With RS facing, smaller hook, and A, beg at lower right front edge, and work sc evenly spaced along right front edge, around neckband, and down left front edge, working 3 sc at each corner. Ch 1, do not turn.

Work one row of rev sc. Join with a sl st to first sc. Fasten off.

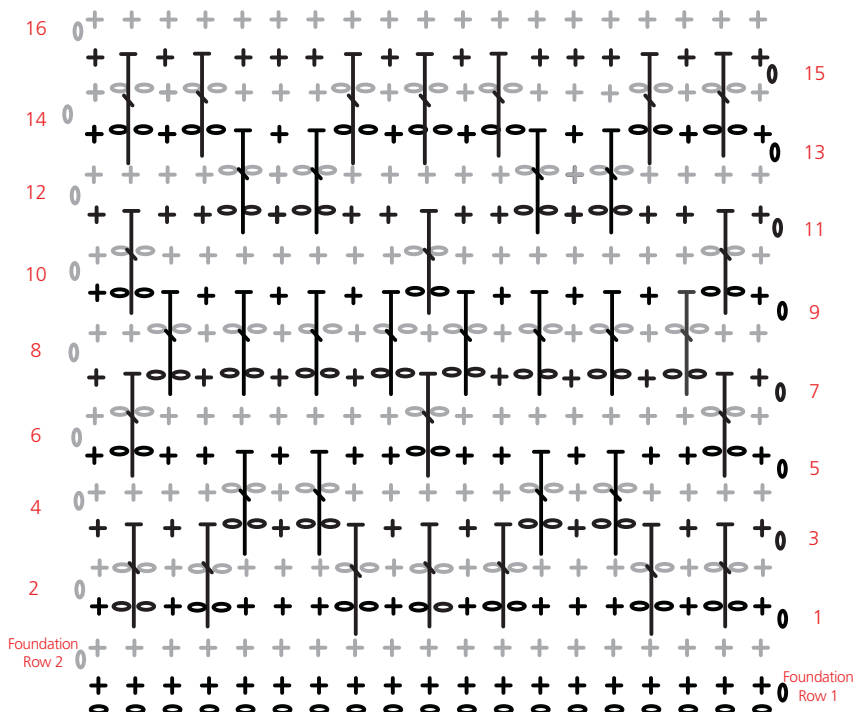
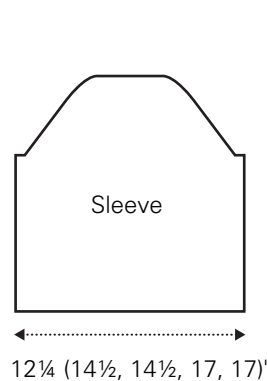
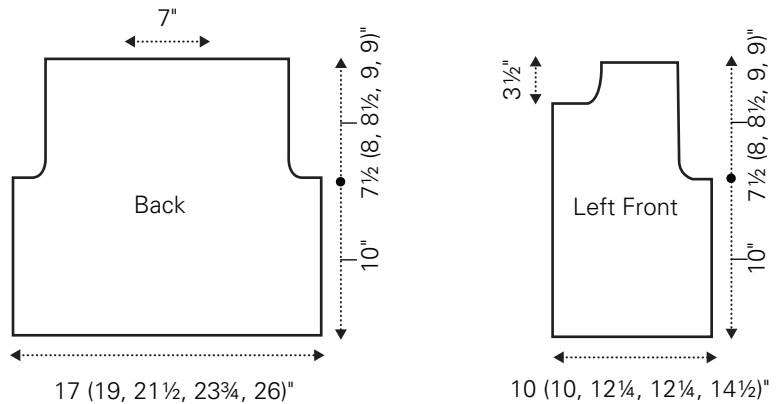
Sleeve edging

With RS facing, smaller hook, and A, beg at lower sleeve seam, and work sc evenly spaced along sleeve edge, ending with sl st to first sc. Ch 1, do not turn.

Work one rnd of rev sc. Join with a sl st to first sc.

Sew on buttons opposite markers. ❤️

Mosaic Jacket



Gemstone Tote



Skill Level

Easy fan stitches are embellished with stone beads and bamboo handles to create this fun bag. The clever felt lining provides added stability and keeps your belongings in place, making this design both pretty and practical. Stitch one up for a fresh new accessory that works with any outfit.

Designed by Kristen Stoltzfus



Materials

Yarn weight: 

Yarn used: Lustra by Berroco

- 2 skeins Lustra by Berroco, 50% wool, 50% Tencel (197 yds/100g) in color 3156 Triomphe Teal

Tools:

- U.S. size G-6 (4.25mm) crochet hook, or size required for gauge
- 2 sheets Creatology Embossed Felt in color Galleria Cashmere Tan
- Light green stone beads, 44 total
- 1" shank button
- Yarn needle
- Beading needle and thread
- 7" round purse handles

◆ Yarn Alternatives ◆

Save: Colrain by Valley Yarns

Spend: Whisper by Austermann

Splurge: Venezia Worsted by Cascade Yarns

Finished measurements

11¼" tall x 10½" wide, excluding handles

Stitches used

Single crochet
Half double crochet
Double crochet
Treble crochet
Fan stitches

Gauge

Rows 1–4 = 2" (5cm) in patt

Special abbreviations

Lg fan: [(1 dc, ch 1) 4 times, 1 dc] in same st

Sm fan: [(1 dc, ch 2) twice, 1 dc] in same st

Note

First ch 3 counts as first dc throughout.

PATTERN

Panel (make 2)

Ch 57.

Row 1: Dc 1 in 4th ch from hook (ch-3 t-ch counts as first dc) and in each ch across, turn. (55 dc)

Row 2 (RS): Ch 3 (counts as first dc here and throughout), dc 3, skip 2 dc, work lg fan in next dc, *skip 2 dc, dc 1 in next dc, skip 2 dc, work lg fan in next dc; rep from * across to last 3 sts, dc 3, turn. (8 lg fans and 15 dc)

Row 3: Ch 3, dc 3, ch 2, sc 1 in top of fan, *ch 2, dc 1 in dc, ch 2, sc 1 in top of fan; rep from * across, ch 2, dc 4, turn. (15 dc)

Row 4: Ch 3, dc 1 in each dc and work sm fan in each sc across, turn. (8 sm fans, 15 dc)

Row 5: Rep row 3.

Row 6: Ch 3, dc 3, *lg fan in sc, dc 1 in dc; rep from * to last 4 sts, dc 4, turn.

Rep rows 3–6 four times, rep row 3 once more. Fasten off.

Finishing

Weave in ends.

Sew beads to the base of every other sm fan and lg fan, alternating fans, on one panel. This will now be front of bag.

With WS of panels together, join yarn in top left corner and sc evenly around through both layers, working 3 sc in each corner, leaving top edge open. Fasten off.

Cut each sheet of felt to 10½" x 9". With RS of felt sheets tog, sew by hand or machine around 3 sides ¼" from edge, leaving one short edge open. Do not turn inside out. Place inside crocheted panels, whipstitch to inside edge of top rows of panels but not in top of last row.

Top edging

Join yarn in side seam.

Rnds 1 and 2: Sc 1 in each st around; join with sl st in first sc. Fasten off.

Closure tab

In center 6 sts of back panel, with RS of panel facing, join yarn.

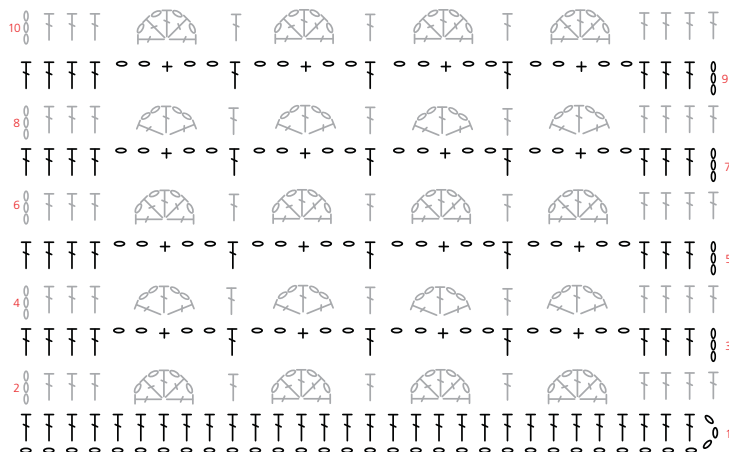
Row 1: Ch 1, hdc 6, turn. (6 hdc)

Rows 2–6: Rep row 1.

Row 7: Skip next 2 sts, [1 hdc, 1 dc, 1 tr, ch 2] in next st, [1 tr, 1 dc, 1 hdc] in next st, skip next st, sl st in last st; fasten off.

With yarn threaded on yarn needle, sew one bamboo handle to each side of bag, wrapping yarn around handle and through each stitch of one side of top edging. With needle and thread, sew button opposite buttonhole. Block lightly. ❤️

Gemstone Tote







Modern Striped Cowl



Skill Level

If you're looking for a simple design that gives you maximum style for minimal effort, this contemporary cowl is just what you need! Single crochet stripes worked in three neutral colors produce a look that will accent your favorite jackets and coats. Wrap this infinity cowl around your neck twice to stay toasty and fashionable this season.

Designed by Melissa Leapman

Materials

Yarn weight: 

Yarn used: 220 Sport by Cascade Yarns

- 1 skein of 220 Sport by Cascade Yarns, 100% Peruvian Highland wool (164 yds/50g) in each of colors 8555 (A), 8401 (B) and 8010 (C)

Tools:

- U.S. size H-8 (5mm) crochet hook, or size required for gauge
- Yarn needle

Finished measurements

Approx 56" circumference x 8" deep

Stitches used

Single crochet

Gauge

16 sc = 4" (10cm) in patt

Stripe pattern

5 rnds A, 1 rnd B, 3 rnds C, 1 rnd B, 5 rnds A, 1 rnd C, 1 rnd A, 1 rnd B, 1 rnd A, 1 rnd C, 5 rnds A, 1 rnd B, 3 rnds C, 1 rnd B, 6 rnds A.

PATTERN

With A, ch 224. Join with a sl st to form a ring.

Rnd 1 (RS): Ch 1, sc 1 in same ch as sl st and in next ch, *ch 2, skip next 2 ch, sc 1 in next 2 ch; rep from * around, ending with ch 2, skip next 2 ch, sl st in first sc.

Rnd 2: Ch 1, sc 2, *ch 2, skip ch-2 sp, sc 2; rep from * around, ending with ch 2, skip ch-2 sp, sl st in first sc.

Rep rnd 2 throughout, following stripe patt until complete. Fasten off.

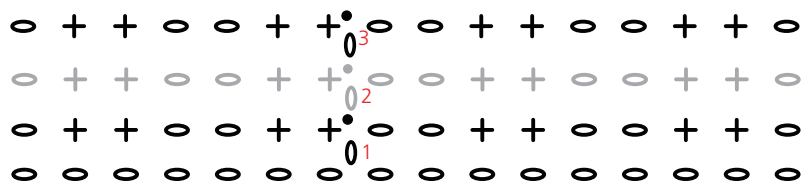
Finishing

Weave in ends. Block. ♥

Yarn Alternatives

- Save:** Sulka Nina by Mirasol
- Spend:** Mulberry Silk Georgette by Jo Sharp
- Splurge:** Savannah by The Fibre Company

Modern Striped Cowl



Stitch Dictionary

Chevron Variations

Chevrons, or zigzag patterns, are fun and easy to do. Once the first row is established, the work builds almost effortlessly into dynamic slanting lines that add interest to many types of projects, from the classic striped afghan to scarves, skirts, and more. In this issue, we explore several variations on the chevron theme.

By Amy Polcyn



Basic chevron

The traditional version, this chevron pattern is suitable for beginners. With its simple appearance, it is perfect for letting the yarn be the star and using dramatic variegated yarns or stripes.

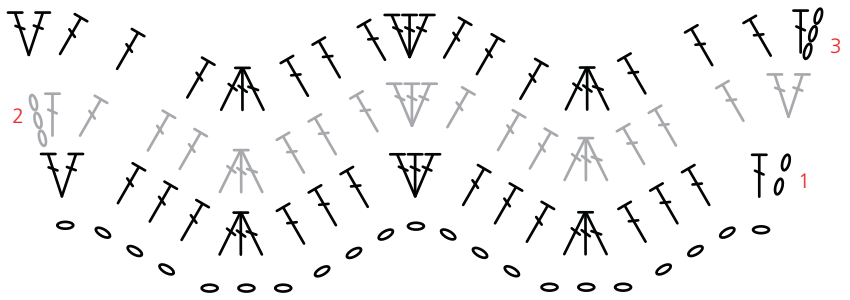
(Start with multiple of 10 sts plus 3 for base chain)

Ch 23.

Row 1: Dc in 3rd ch from hook (counts as 2 dc), *dc 3, dc3tog, dc 3, 3 dc in next ch; rep from * across, end dc 3, 2 dc in last ch.

Row 2: Ch 3 (counts as dc) dc 1 in same st, *dc 3, dc3tog, dc 3, 3 dc in next st; rep from * across, end 2 dc in last st instead of 3 dc.

Rep row 2 for patt.



Eyelet chevron

Instead of the usual increases and decreases, this breezy chevron pattern uses chain spaces and skipped stitches to form the peaks and valleys. This version is perfect when you want to achieve a lacier look.

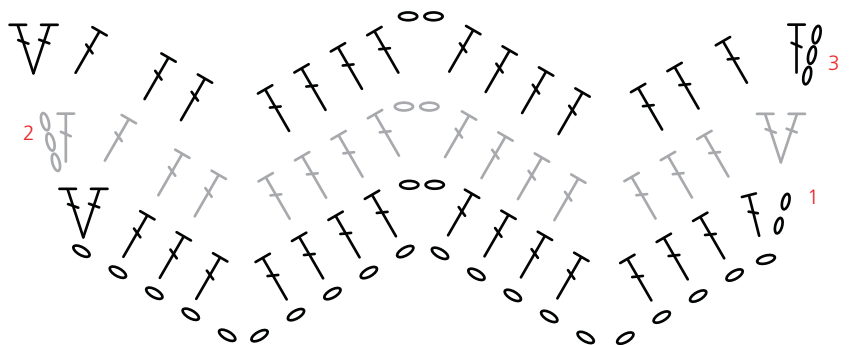
(Start with multiple of 10 sts plus 2 for base chain)

Ch 22.

Row 1: Dc in 3rd ch from hook (counts as 2 dc), dc 3, skip 2 ch, *dc 4, ch 2, dc 4, skip 2 ch; rep from * across, end dc 3, 2 dc in last ch.

Row 2: Ch 3 (counts as dc) dc 1 in same st, dc 3, skip 2 sts, *dc 3, [1 dc, ch 2, 1 dc] in ch-2 sp, dc 3, skip 2 sts; rep from * across, end 2 dc in last st instead of 3 dc.

Rep row 2 for patt.



Ridged chevron

Though similar to the basic chevron, this design uses yet another type of increase and decrease. Additionally, the pattern is worked with all stitches through the back loops, giving a heavier ridged appearance that is perfect for bolder, more rugged designs.

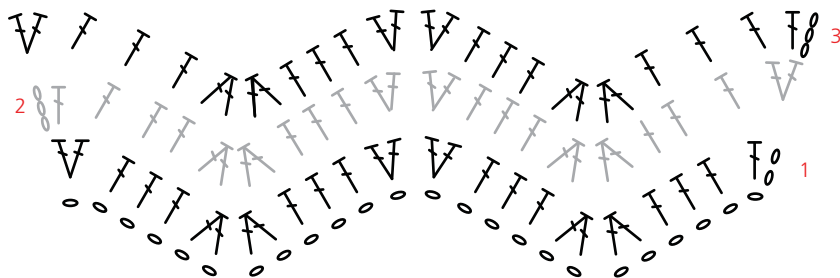
(Start with multiple of 12 sts plus 3 for base chain)

Ch 27.

Row 1: Dc in 3rd ch from hook (counts as 2 dc), *dc 3, [dc2tog] twice, dc 3, [2 dc in next ch] twice; rep from * across, end dc 3, 2 dc in last ch.

Row 2: Ch 3 (counts as dc) dc 1 in blo of same st, *dc 3 in blo, [dc2tog] twice in blo, dc 3 in blo, [2 dc in blo of next st] twice; rep from * across, end 2 dc in blo of last st instead of 3 dc.

Rep row 2 for patt.



Project ideas

Bookmark

Finished measurements:

Approx 7–8" long x 2" wide

Materials

- Approx 20 yards fingering yarn
- U.S. size C-2 (2.5mm) crochet hook
- Yarn needle

Gauge

Gauge is not essential for this project.

Ch 43 for basic chevron, 42 for eyelet chevron, or 39 for ridged chevron. Work in pattern until piece measures 2" or desired width. Fasten off. Weave in ends. Block.

Afghan

Finished measurements:

Approx 60" long x 40" wide

Materials

- Approx 1500 yards worsted weight yarn
- U.S. size I-9 (5.5mm) crochet hook
- Yarn needle

Gauge

Gauge is not essential for this project.

Ch 173 for basic chevron, 172 for eyelet chevron, or 171 for ridged chevron. Work in pattern until throw measures 60" or desired length. Fasten off. Weave in ends. Block.

Crochet & Knit Shop



get the
**PERIWINKLE
MITTS KIT**

bit.ly/Periwinkle-Mitts-Kit

Keep your fingers free and your hands toasty with these charming mitts. An interesting combination of stitches forms a beautifully textured fabric that almost looks knitted. Worked flat and seamed, this pair is a quick yet engaging project you can make in a weekend. This kit includes the pattern and all the yarn you'll need to make these wonderful mitts.

Shop online at www.CrochetandKnitShop.com
or call (800)610-1464



Subtle Chevron Cowl



Skill Level

Fun stripes and a classic rippled stitch pattern make this cowl a must-have accessory for fall. The fine yarn creates a light but cozy fabric that will keep you warm and comfortable when you're in a chilly office or outside playing in the leaves. Worked in the round beginning with simple foundation stitches, this design keeps the finishing work to a minimum.

Designed by *Tian Connaughton*

Materials

Yarn weight: 3

Yarn used: Hat Box by Mrs. Crosby

- 1 skein Hat Box by Mrs. Crosby, 75% merino, 15% silk, 10% cashmere (317 yds/100g) in each of colors New Leaf (A) and Boston Fern (B)

Tools:

- U.S. size F-5 (3.75mm) crochet hook, or size required for gauge
- Yarn needle

Yarn Alternatives

Save: Gloss DK by Knit Picks

Spend: Huasco DK by Araucania

Splurge: Refined Sport by Freia Fine Handpaints

Finished measurements

35½" circumference x 6½" deep, after blocking

Stitches used

Double crochet
Foundation double crochet

Gauge

20 dc and 12 rows = 4" (10cm) in patt

Special abbreviation

Fdc (foundation double crochet):

Ch 3, yo, insert hook in 3rd chain from hook, yo and pull up loop (3 loops on hook), yo and draw through 1 loop (1 ch-sp made), [yo and draw through 2 loops] twice (1 foundation double crochet). *Yo, insert hook under the 2 loops of the ch-sp of last stitch, yo and pull up loop, yo and draw through 1 loop (ch-sp), [yo and draw through 2 loops] twice (dc made); rep from * for indicated number of foundation sts.

Stripe pattern

5 rnds B, 3 rnds A, 2 rnds B, 1 rnd A, 1 rnd B, 2 rnds A, 3 rnds B.

PATTERN

With A, fdc 170. Join with a sl st to form a ring.

Rnd 1: Ch 2 (counts as a st), dc 2, 3 dc in next dc, dc 3, *skip next 2 dc, dc 3, 3 dc in next dc, dc 3; rep from * to last dc, skip dc, join with a sl st.

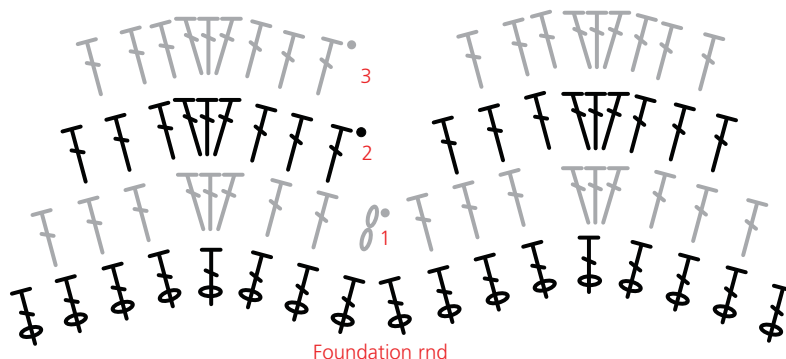
Rnd 2: Skip first dc, dc 3, 3 dc in next dc, dc 3, *skip next 2 dc, dc 3, 3 dc in next dc, dc 3; rep from * to last dc, skip dc, join with a sl st.

Rep rnd 2 throughout, following stripe patt until complete. Fasten off.

Finishing

Weave in ends. Block. ♥

Subtle Chevron Cowl





Beginner Cable Hat and Scarf Set



Skill Level

If you've never crocheted cables before, this classic hat and scarf set is a simple and stylish introduction to this easy technique. Double crochet post stitches and clusters create a fun texture that shows off the beauty of the soft, wool blend yarn. The intertwining stitches dance across these gorgeous accessories, creating a set you can dress up or down.

Designed by Tian Connaughton

Materials

Yarn weight: 

Yarn used: Simplicity by HiKoo

- 4 skeins Simplicity by HiKoo, 55% merino superwash, 28% acrylic, 17% nylon (117 yds/50g) in color 063 Amber Waves

Tools:

- U.S. size H-8 (5mm) crochet hook, or size required for gauge
- Yarn needle

Yarn Alternatives

Save: Encore DK by Plymouth

Spend: Mirage by King Cole

Splurge: Silk Blend by Manos Del Uruguay

Finished measurements

Scarf: 43" long x 4½" wide, after blocking

Hat: 18" circumference x 8½" tall (stretches to fit)

Stitches used

Single crochet
Half double crochet
Post stitches

Technique used

Cables

Gauge

14 rows = 3" (8cm) in cable patt
16 hdc and 16 rows = 4" (10cm)

Special abbreviations

FPdc (front post double crochet):

Yo, insert hook from front of work to back, then to front again around post of st in row below, yo and pull up a loop around post of st (3 loops on hook), [yo and draw through 2 loops] twice to complete dc.

FPcl (front post cluster): Yo, insert hook from front of work to back, then to front again around post of st indicated, yo and pull up a loop, yo and draw through 2 loops on hook, yo, insert hook from front to back to front around post of same st, yo and pull up a loop, yo and draw through 2 loops on hook, yo and draw through rem loops on hook.

SCARF

Ch 24.

Row 1 (RS): Sc 1 in 2nd ch from hook and in each ch across, turn. (23 sc)

Row 2 and all WS rows: Ch 1, sc 1 in each sc across, turn.

Row 3: Ch 1, sc 4, FPdc around sc one row below next sc, sc 6, FPcl around sc one row below next sc, sc 6, FPdc around sc one row below next sc, sc 4, turn.

Row 5: Ch 1, sc 4, FPdc around FPdc, sc 5, skip 1 sc, FPcl around next FPcl, sc 1, FPcl around previous FPcl in row 3, skip 1 sc, sc 5, FPdc around FPdc, sc 4, turn.

Row 7: Ch 1, sc 4, FPdc 1, sc 4, FPcl around FPcl, sc 3, FPcl around FPcl, sc 4, FPdc 1, sc 4, turn.

Row 9: Ch 1, sc 4, FPdc 1, sc 3, FPcl around FPcl, sc 5, FPcl around FPcl, sc 3, FPdc 1, sc 4, turn.

Row 11: Ch 1, sc 4, FPdc 1, sc 2, FPcl around FPcl, sc 7, FPcl around FPcl, sc 2, FPdc 1, sc 4, turn.

Row 13: Ch 1, sc 4, FPdc 1, sc 2, FPcl around FPcl, sc 7, FPcl around FPcl, sc 2, FPdc 1, sc 4, turn.

Row 15: Ch 1, sc 4, FPdc 1, sc 3, FPcl around FPcl, sc 5, FPcl around FPcl, sc 3, FPdc around FPdc, sc 4, turn.

Row 17: Ch 1, sc 4, FPdc 1, sc 4, FPcl around FPcl, sc 3, FPcl around FPcl, sc 4, FPdc 1, sc 4, turn.

Row 19: Ch 1, sc 4, FPdc 1, sc 5, FPcl around FPcl, sc 1, FPcl around FPcl, sc 5, FPdc 1, sc 4, turn.

Row 21: Ch 1, sc 4, FPdc 1, sc 6, FPcl around post of both FPcl from row below, sc 6, FPdc 1, sc 4, turn.

Row 22: Ch 1, sc 1 in each sc across, turn.

Rep rows 5–22 ten more times.

Next row: Ch 1, sc 1 in each sc across. Fasten off.

Finishing

Weave in ends. Block.

HAT

Brim

Ch 18.

Row 1 (RS): Sc 1 in 2nd ch from hook and in each ch across, turn. (17 sc)

Row 2 and all WS rows: Ch 1, sc 1 in each sc across, turn.

Row 3: Ch 1, sc 2, FPdc around sc one row below next sc, sc 5, FPcl around sc one row below next sc, sc 5, FPdc around sc one row below next sc, sc 2, turn.

Row 5: Ch 1, sc 2, FPdc around FPdc, sc 4, FPcl around FPcl, sc 1, FPcl around FPcl, sc 4, FPdc around FPdc, sc 2, turn.

Row 7: Ch 1, sc 2, FPdc around FPdc, sc 3, FPcl around FPcl, sc 3, FPcl around FPcl, sc 3, FPdc around FPdc, sc 2, turn.

Row 9: Ch 1, sc 2, FPdc around FPdc, sc 2, FPcl around FPcl, sc 5, FPcl around FPcl, sc 2, FPdc around FPdc, sc 2, turn.

Row 11: Ch 1, sc 2, FPdc around FPdc, sc 2, FPcl around FPcl, sc 5, FPcl around FPcl, sc 2, FPdc around FPdc, sc 2, turn.

Row 13: Ch 1, sc 2, FPdc around FPdc, sc 3, FPcl around FPcl, sc 3, FPcl around FPcl, sc 3, FPdc around FPdc, sc 2, turn.

Row 15: Ch 1, sc 2, FPdc around FPdc, sc 4, FPcl around FPcl, sc 1, FPcl around FPcl, sc 4, FPdc around FPdc, sc 2, turn.

Row 17: Ch 1, sc 2, FPdc around FPdc, sc 5, FPcl around post of both FPcl of row below, sc 5, FPdc around FPdc, sc 2, turn.

Row 18: Ch 1, sc 1 in each sc across, turn.

Rep rows 5–18 four more times.

Rep rows 5–17 once more. Do not fasten off.

Holding short ends together with RS facing, sc through both layers to join in a band. Do not fasten off.

Body

Next rnd: Ch 2, hdc 68 evenly around upper edge of brim, join. Working in a continuous spiral, work in hdc until piece measures 7" from lower edge of brim.

Shape crown

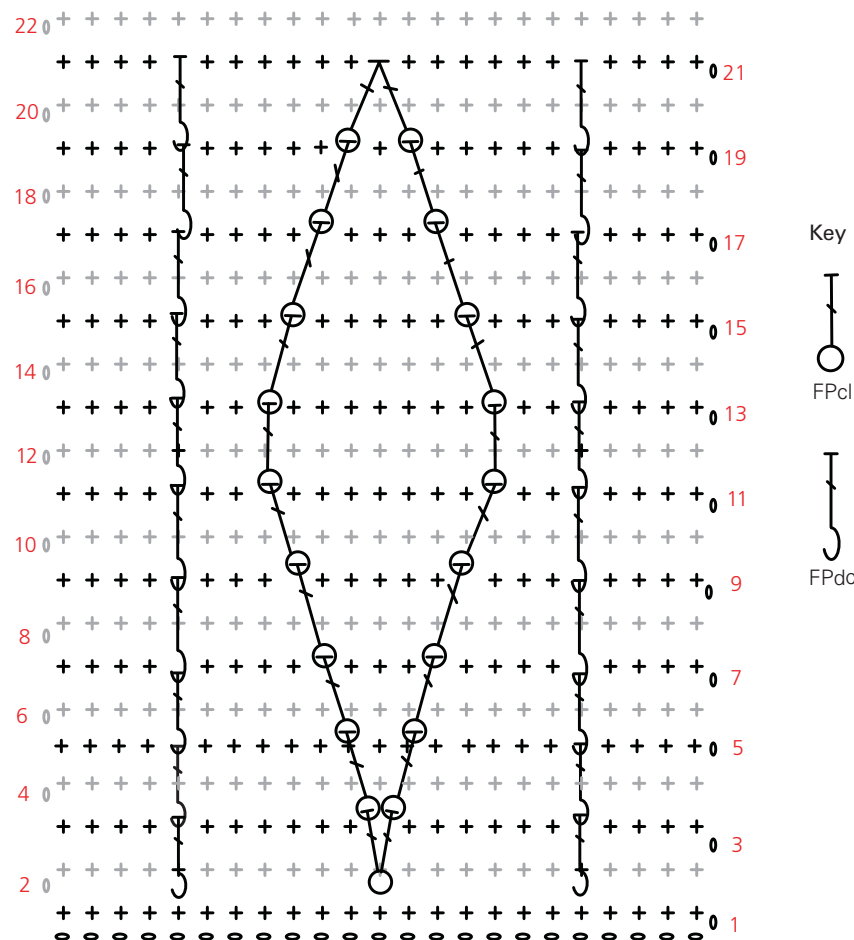
Maintaining continuous spiral, work [hdc 2, hdc2tog] until top of hat closes. Fasten off.

Finishing

Weave in ends. Block. ♥



Beginner Cable Scarf



Crochet & Knit Shop



Learn how to easily crochet an adorable moose toy using simple single crochet stitches. Crochet along with designer and author, Megan Kreiner, and learn how to make a precious stuffed toy that will be cherished for years to come.

**CROCHET
MERRY
MOOSE
DVD**

bit.ly/Merry-Moose-Video

Shop online at www.CrochetandKnitShop.com
or call (800)610-1464



Stadium Blanket



Skill Level

Football season is here, and this blanket is perfect for keeping fans warm as they cheer for their favorite team! Fold it up to store it in the attached pocket, and the clever strap allows you to carry it to and from the stadium with ease. Then, cuddle under it to stay warm during the game or keep it folded to use it as a handy seat cushion.

Designed by Angelia Robinson

Materials

Yarn weight: 

Yarn used: Cascade 220 by Cascade Yarns

- 7 skeins Cascade 220 by Cascade Yarns, 100% wool, (220 yds/100g) in color 2401 Burgundy (A)
- 2 skeins in color 8505 White (B)

Tools:

- U.S. size H-8 (5mm) crochet hook, or size required for gauge
- Yarn needle
- Sewing needle and thread
- ½" button

◆ Yarn Alternatives ◆

Save: Wool-Ease by Lion Brand
Spend: Encore by Plymouth Yarn
Splurge: Vintage by Berroco

Finished measurements

48" wide x 40" long

Stitches used

Single crochet
Double crochet

Gauge

16 dc and 8 rows = 4" (10cm)

Note

Personalize your blanket with your favorite team's colors.

PATTERN

With A, ch 194.

Row 1 (RS): Dc 1 in 3rd ch from hook (does not count as dc) and in each ch to end, turn. (192 dc)

Row 2: With A, ch 2 (does not count as st here and throughout), dc 1 in first dc, dc 190 to last st, dc 1 in last st, skip t-ch, turn.

Rows 3-12: Rep row 2.

Stripe motif

Row 1: Join B, ch 2, dc 1 in first dc, dc 191, turn.

Row 2: With B, rep row 1.

Row 3: With A, ch 1, sc 1 in first dc, sc 191, skip t-ch, turn.

Row 4: With A, ch 1, sc 192, turn.

Row 5: With B, ch 2, dc 1 in first st, dc 191, turn.

Row 6: With B, rep row 1.

Change to A and work evenly for 40 rows, then rep stripe motif. Change to A again and work evenly for 12 more rows. Fasten off.

Pocket

With B, ch 50.

Row 1 (RS): Dc 1 in 3rd ch from hook (does not count as dc) and in each ch to end, turn. (48 dc)

Row 2: With B, ch 2, dc 1 in first dc and in each dc across, turn.

Rows 3-12: Rep row 2.

Reverse stripe motif

Row 1: Join A, ch 2, dc 1 in first dc, dc 47, skip t-ch, turn.

Row 2: With A, rep row 1.

Row 3: With B, ch 1, sc 1 in first dc, sc 47, skip t-ch, turn.

Row 4: With B, ch 1, sc 48, turn.

Row 5: With A, ch 2, dc 1 in first st, dc 47, turn.

Row 6: With A, rep row 1.

Change to B and work evenly for 8 rows. Fasten off.

Finishing

Handle/gusset

With B, ch 241.

Row 1: Sc in 2nd ch from hook and each ch across. (240 sc)

Rows 2-8: Ch 1, sc 240, turn.

Fasten off.

Block pieces.

Sew ends of handle/gusset tog, then sew to pocket along sides and bottom, leaving top open. Pin pocket to lower left corner of blanket. Join A and work 1 rnd of sc evenly around all outside edges of blanket, working 3 sc in each corner and working through pocket layer as well where applicable. Join to first sc with a sl st, fasten off. Sew rem side of pocket in place with sewing needle and thread, leaving top open to insert blanket.

With WS facing, sew button to lower right corner of blanket. When blanket is folded and inserted into pocket, use spaces between stitches as buttonholes and button through all thicknesses of blanket.

Weave in ends. ♥



Denise2Go Crochet for a Cure

Help eliminate breast cancer in this generation!



Interchangeable hooks for Tunisian & standard crochet or knitting.

Made in the USA
888-831-8042 • knitdenise.com

COME AND Crochet Awhile!

Join our **FREE** community for crochet lovers just like you.

Get started with a **FREE** download of one of our popular pattern collections and sign up for free.

www.CrochetMe.com/Free-eBooks

crochetme.com



Keep your pattern handy when you're *on-the-go!*

Did you know you can get *Love of Crochet* on your tablet? You'll have the full issue with pattern instructions, full color photos and charts, not to mention live links to more crocheting resources—including additional photos and how-to picture and video tutorials on **LoveofCrochet.com**, and must-have products from **CrochetandKnitShop.com**. Never again find you have left the house without your pattern—as long as you have your tablet in your project bag, you will always have your copy of *Love of Crochet* handy!



Find your mobile *Love of Crochet* magazine at:
bit.ly/Digital-Issue

Autumn
Adventure



Cabled Crew Neck Sweater



Skill Level

He'll love the timeless shape on this handsome pullover. The stylish cables add texture and warmth, so he'll be ready for brisk winds and changing weather. Simple ribbing frames the main fabric, creating a versatile look that will take him anywhere he wants to go.

Designed by Melissa Leapman

Materials

Yarn weight: 

Yarn used: Longwood Sport by Cascade Yarns

- 15 (15, 16, 17) skeins Longwood Sport by Cascade Yarns, 100% extra fine superwash merino (273 yds/100g) in color 36

Tools:

- U.S. size G-6 (4mm) crochet hook, or size required for gauge
- U.S. size E-4 (3.5mm) crochet hook
- Yarn needle

Yarn Alternatives

Save: Liberty Wool by Classic Elite

Spend: Naturally Soft Merino by MillaMia

Splurge: Gems Sport by Louet

Sizes

Men's Small (Medium, Large, Extra Large)

Finished measurements

Chest: 42 (47, 52, 57)"

Length: 25½ (26¾, 26¾, 28)"

Stitches used

Single crochet
Half double crochet
Post stitches

Techniques used

Cables

Gauge

16 sts and 12 rows = 4" (10cm) in cable patt using larger hook

Special abbreviations

FPdtr (front post double treble): [Yo] 3 times, insert hook from front to back to front around post of st indicated, yo and pull up a loop around the post of st, [yo and draw through 2 loops] 4 times to complete dtr.

FPtr (front post treble crochet): [Yo] twice, insert hook from front to back to front around post of st indicated,

yo and pull up a loop around the post of st, [yo and draw through 2 loops] 3 times to complete tr.

RC (right cable): Skip next 2 sts, FPdtr around post of next 2 sts 2 rows below, working behind 2 post sts just worked, FPdtr around post of 2 skipped sts 2 rows below.

LC (left cable): Skip next 2 sts, FPdtr around post of next 2 sts 2 rows below, working in front of 2 post sts just worked, FPdtr around post of 2 skipped sts 2 rows below.

Stitch patterns

Sideways rib

Foundation row (RS): Sc 1 in second ch from hook and in each ch across, turn.

Row 1: Ch 1, sc 1 in blo of each sc across, turn.
Rep row 1 for patt.

Cable

Foundation row (RS): Hdc 1 in 3rd ch from hook and in each ch across, turn.

Rows 1 and 3 (WS): Ch 2 (counts as first st here and throughout), hdc 1 in each st across, ending with hdc 1 in top of t-ch, turn.



Row 2: Ch 2, hdc 3, *RC, skip sts used in cable, FPtr in next 2 sts 2 rows below, hdc 4; rep from * across, RC, skip sts used in cable, FPtr in next 2 sts 2 rows below, hdc 3, hdc 1 in top of t-ch, turn.

Row 4: Ch 2, hdc 3, *FPtr in next 2 sts 2 rows below, LC, hdc 4; rep from * across, ending with FPtr in next 2 sts 2 rows below, LC, hdc 3, hdc 1 in top of t-ch, turn. Rep rows 1–4 for patt.

Notes

To inc 1 st, work 2 hdc in same st. To dec 1 st, work hdc2tog. Work all increases and decreases 1 st in from edge. Always skip hdc behind every front post st made. After armhole shaping, omit cabled sections where there are only enough sts for partial cables; work in hdc over edge sts instead.

PATTERN

Back

With smaller hook, ch 16. Work in sideways rib patt on 15 sts until piece, when slightly stretched, measures approx 19 (21½, 24, 26½)" from beg. Fasten off.

With larger hook, join yarn to right edge of one longer side of ribbed piece, and ch 1. Work 84 (94, 104, 114) sc evenly spaced along long edge of ribbed piece. Ch 2, turn.

Beg cable patt and work even until piece measures approx 16¼" from beg, ending with a WS row. Do not ch 2. Turn.

Shape armholes

Next row (RS): Sl st in first 7 (9, 11, 13) sts, ch 2, work in patt until 6 (8, 10, 12) sts rem in row. Ch 2, turn, leaving rest of row unworked. (72 [78, 84, 90] sts)

Work even in patt until piece measures approx 24½ (25¾, 25¾, 27)" from beg, ending with a WS row.

Shape neck

Next row (RS): Work across first 21 (24, 27, 30) sts, ch 2, turn, leaving rest of row unworked.

Dec 1 st at neck edge once. (20 [23, 26, 29] sts on this side) Work even in patt until piece measures approx 25½ (26¾, 26¾, 28)" from beg. Fasten off.

For second side of neck, with RS facing, skip center 30 sts, join yarn with a sl st to next st, ch 2, and complete same as first side.

Front

Work same as back until piece measures approx 22½ (23¾, 23¾, 25)" from beg, ending with a WS row.

Shape neck

Next row (RS): Work across first 25 (28, 31, 34) sts, ch 2, turn, leaving rest of row unworked.

Dec 1 st at neck edge every row 5 times. (20 [23, 26, 29] sts on this side)

Work even in patt until this side measures same as back to shoulders. Fasten off.

For second side of neck, with RS facing, skip center 22 sts, join yarn with a sl st to next st, ch 2, and complete same as first side.

Sleeves

With smaller hook, ch 16. Work in sideways rib patt on 15 sts until piece, when slightly stretched, measures approx 8" from beg. Fasten off.

With larger hook, join yarn to right edge of one longer side of ribbed piece, and ch 1. Work 34 sc evenly spaced along long edge of ribbed piece. Ch 2, turn.

Beg cable patt, inc 1 st each side every row 0 (4, 6, 18) times, every other row 15 (21, 19, 12) times, then every 4 rows 5 (0, 0, 0) times. (74 [84, 84, 94] sts)

Work even in patt until sleeve measures approx 21 (20¾, 20, 20)" from beg. Fasten off.

Finishing

Sew shoulder seams.

Neckband

With smaller hook, ch 7. Work in sideways rib patt until piece

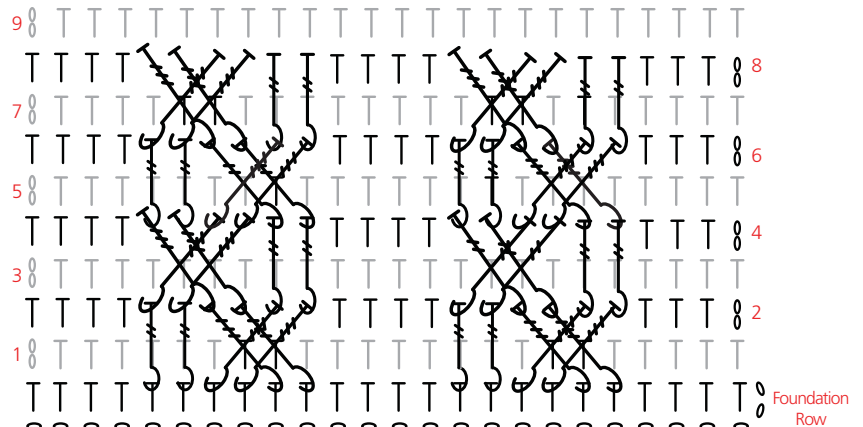
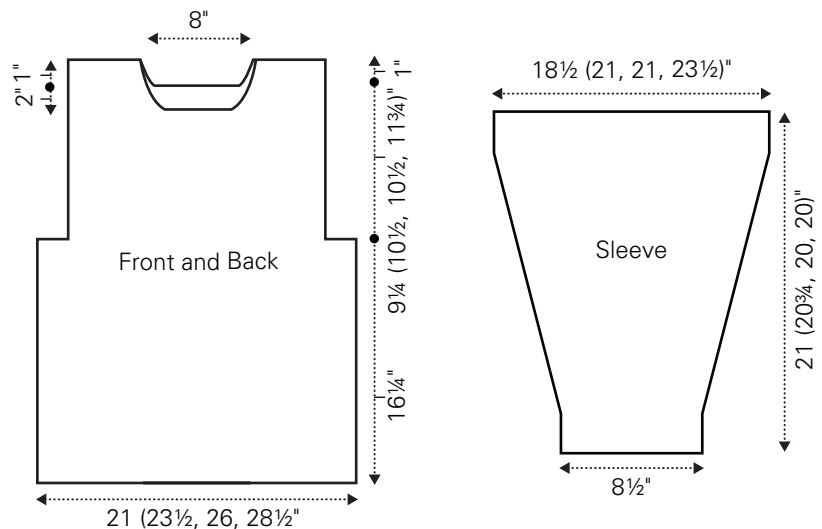
when slightly stretched fits around neckline. (6 sc each row) Fasten off.

Sew foundation row of neckband to last row of neckband. Sewing through back loops of each sc,

sew neckband in place in neckline, placing seam at center of back neck.

Set in sleeves. Sew sleeve and side seams. Weave in ends. Block. ♥

Cabled Crew Neck Sweater



Autumn
Adventure



Super Cute Messenger Bag



This adorable bag features plenty of useful pockets and functional details, but it's surprisingly easy to crochet. Crossed double crochet stitches give it a rich texture, while the whimsical accessories give it a touch of sass. Choose a ribbon that catches your eye to create a fun strap that matches your signature style.

Designed by Dana Bincer of Yarnovations.com

Materials

Yarn weight: 

Yarn used: 220 by Cascade Yarns

- 2 skeins 220 by Cascade Yarns, 100% worsted wool (220 yds/100g) in color Magenta

Tools:

- U.S. size J-10 (6mm) crochet hook, or size required for gauge
- Locking stitch markers
- Yarn needle
- Sewing needle and thread
- 2 yards extra wide double fold bias tape, ½" wide
- 1½" D-rings, 6 total
- 12" zipper
- 2½ to 5 yards of ribbon (for straps)
- 1 yard lining fabric (optional)
- Swivel hook (optional)
- 5" elastic, ¼" wide (optional)

Yarn Alternatives

Save: Wool of the Andes by Knit Picks
Spend: Encore by Plymouth
Splurge: Duchess by Trendsetter Yarns

Finished measurements

12" square

Stitches used

Single crochet
Half double crochet
Double crochet

Gauge

14 sts and 11 rows = 4" (10cm) in patt

PATTERN

Bag

Front panel

Ch 43.

Row 1: Sc 1 in 2nd ch from hook and each ch across, turn. (42 sts)

Row 2: Ch 2, *skip 1 st, dc 1 in next st, dc 1 in skipped st; rep from * across, turn.

Row 3: Ch 1, sc across.

Rows 4–33: Rep rows 2 and 3.

Fasten off.

Back panel

Work as for front panel. Do not fasten off. Continue as follows for flap:

Rows 34–44: Rep rows 2 and 3 from front panel, ending with row 2.

Row 45: Ch 1, sc across, leaving last

2 sts unworked, turn. (40 sts)

Row 46: Ch 2 (counts as first st), skip 3 st, dc 1 in next st, dc 1 in skipped st, *skip 1 st, dc 1 in next st, dc 1 in skipped st; rep from * across. (38 sts)

Rows 47–57: Rep rows 45 and 46. (16 sts)

Fasten off.

Side/bottom/top panel

Ch 169.

Row 1: Sc 1 in 2nd ch from hook and each ch across, turn. (168 sts)

Row 2: Ch 1, sc across, turn.

Row 3: Ch 1, sc 126, ch 42, skip rem sts.

Row 4: Ch 1, sc 1 in 2nd ch from hook and each ch and st across, turn.

Row 5: Rep row 2.

Fasten off.

Pockets

Flat pocket

Ch 15.

Row 1: Sc 1 in 2nd ch from hook and each across, turn. (14 sts)

Row 2: Ch 2, *skip 1 st, dc 1 in next st, dc 1 in skipped st; rep from * across, turn.

Row 3: Ch 1, sc across.

Rows 4–11: Rep rows 2 and 3. Fasten off. Cut yarn, leaving a long tail for sewing.

Bottle pocket

Rows 1–11: Work as for flat pocket.

Row 12: Turn to side of rows 11–1, hdc 14 across. Turn to foundation ch, hdc across. Turn to side of rows 1–11, hdc 14 across. (42 sts) Fasten off. Cut yarn, leaving a long tail for sewing.

Finishing

With locking stitch markers, pin side panel around rows 1–33 of the front and back panels, leaving the ch-42 section at the top as an opening for the zipper. Sew in place.

Pin bottle pocket in place on front and sew, leaving top open. Pin flat pocket in place on front, under flap. Sew in place, leaving top open.

If desired, cut lining fabric to fit inside of bag (allowing for a ¼" seam on each side) and sew in place. Sew zipper in place at top of bag. Sew bias tape around edges of flap and top edge of pockets.

If desired, sew elastic to inside top edge of bottle pocket.

Sew D-rings in place as shown. Sew ribbon around D-rings to form straps, cutting ribbon to desired strap length. If desired, add swivel hook as shown. ♥



get inspired!

In every issue, you'll find:

- Fun-to-make projects for garments, accessories, gifts, and home décor
- Valuable tips & techniques
- Easy-to-follow instructions
- The latest trends on colors, yarns, and more!

Claim your
**FREE PREVIEW
ISSUE**

today!



www.LoveofKnitting.com/PreviewIssue • 1-866-436-2465

Try something NEW!

knit • sew • bead • crochet • stitch



craft.girl is fresh, fun, and fabulous! We are a brand new magazine with content and projects for everyone, every crafter, and especially those who would like to try new crafts, including jewelry, beading, knitting, crochet, embroidery, and sewing projects. *craft.girl* is a positive platform, featuring a can-do attitude, fresh ideas, and easy, fabulous DIY projects!

interweavestore.com



Yarn 101

Solids & Semisolids

BY CAROL J. SULCOSKI

In our last issue, we discussed what makes handpainted yarns different from machine-dyed yarns. While all handpainted yarns have certain things in common – more variation from dye lot to dye lot, for example – you’ll quickly discover that they come in a very wide range of styles. Don’t despair! By grouping handpainted yarns into categories based on their colors, you can better understand how they will behave on the needles and select the perfect project and stitch pattern. Let’s start with solids and semisolids.

Solids & Semisolids

Just as the name implies, this category consists of yarns hand dyed using all one color, or where one nearly solid color predominates. Take a look at the yellow swatch. Although dyed by hand, this yarn looks very much like a machine-dyed yarn, with no variation in the lightness or darkness of the color and very even saturation of color. Other yarns in this category may be dyed all in one color, like the green swatch, but with more variation in lightness and darkness. (Note the areas of deeper green and paler green on each strand.) Still other yarns in this category are dyed mostly in one color but with subtle hints of other colors. The butterscotch swatch is mainly orange-gold in color, but if you look closely you can also see hints of pale gold and olive green. The hints are noticeable, but not strong enough to overpower the base color of the yarn.

Versatility

Solid and semisolid yarns are extremely versatile, the workhorses of the handpainted world.

Because they appear to your eyes as a single, fairly uniform color, the color won't drown out your stitchwork. You can confidently use all sorts of stitch patterns, including cables, lace, or texture. Solids and semisolids are also great for colorwork since they don't contain wild color combinations that will distract from the two-color motifs.

Getting Started

If you're nervous about working with handpainted yarns, begin by playing with solids and semisolids, perhaps using a favorite stitch or pattern you've used before. Notice how the beauty of the color accentuates your stitchwork, while the subtle changes in color or saturation give the project depth and complexity. ❤️



Yellow swatch - Even color saturation



Green swatch - Some variation in color saturation











Butterscotch swatch - Hints of different colors



Basic Crochet Instructions

STANDARD YARN WEIGHT SYSTEM

Standards and guidelines for crochet and knitting: categories of yarn, gauge ranges, and recommended needle and hook sizes

								
Yarn weight symbol and category names	LACE	SUPER FINE	FINE	LIGHT	MEDIUM	BULKY	SUPER BULKY	JUMBO, ROVING
Type of yarns in category	Fingering 10 count crochet thread	Sock, Fingering, Baby	Sport, Baby	DK, Light Worsted	Worsted, Afghan, Aran	Chunky, Craft, Rug	Bulky Roving	Bulky Roving
Knit gauge range* in stockinette stitch to 4 inches	33–40** sts	27–32 sts	23–26 sts	21–24 sts	16–20 sts	12–15 sts	6–11 sts	6 sts and fewer
Recommended needle in metric size range	1.5–2.25 mm	2.25–3.25 mm	3.25–3.75 mm	3.75–4.5 mm	4.5–5.5 mm	5.5–8 mm	8 mm and larger	12.75 mm and larger
Recommended needle in U.S. size range	000 to 1	1 to 3	3 to 5	5 to 7	7 to 9	9 to 11	11 and larger	17 and larger
Crochet gauge* range in single crochet to 4 inches	32–42 double crochets**	21–32 sts	16–20 sts	12–17 sts	11–14 sts	8–11 sts	5–9 sts	5 sts and fewer
Recommended hook in metric size range	Steel*** 1.6–1.4mm regular hook 2.25 mm	2.25–3.5 mm	3.5–4.5 mm	4.5–5.5 mm	5.5–6.5 mm	6.5–9 mm	9mm and larger	16 mm and larger
Recommended hook in U.S. size range	Steel*** 6, 7, 8 regular hook B-1	B-1 to E-4	E-4 to 7	7 to I-9	I-9 to K-10½	K-10½ to M-13	M-13 and larger	Q and larger

SKILL LEVELS FOR CROCHETING

- **Beginner** Projects for first-time crocheters using basic stitches. Minimal shaping.
- **Easy** Projects using yarn with basic stitches, repetitive stitch patterns, simple color changes, and simple shaping and finishing.
- **Intermediate** Projects using a variety of techniques, such as basic lace patterns or color patterns, mid-level shaping, and finishing.
- **Experienced** Projects with intricate stitch patterns, techniques, and dimension, such as non-repeating patterns, multi-color techniques, fine threads, small hooks, detailed shaping, and refined finishing.

* These are guidelines only: They reflect the most commonly used gauges and needle or hook sizes for specific yarn categories.

** Lace weight yarns are usually knitted or crocheted on larger needles and hooks to create lacy, openwork patterns. Accordingly, a gauge range is difficult to determine. Always follow the gauge stated in your pattern.

*** Steel crochet hooks are sized differently from regular hooks — the higher the number, the smaller the hook, which is the reverse of regular hook sizing.

A Standard & Guidelines booklet from the Craft Yarn Council of America is available at www.craftyarn-council.com/standards.html. Click on the "Downloadable Guidelines PDF" link on the left side of the page.

ABBREVIATIONS

alt • alternate
 beg • beginning
 bet • between
 bl/blo • back loop only (i.e. insert hook under back loop only)
 BPdc • back post double crochet
 ch(s) • chain stitch(es)
 ch sp(s) • chain space(s)
 cl (s) • clusters
 cm • centimeters
 cont • continue
 dc • double crochet
 dc2tog • work 2 dc together
 dec • decrease
 dtr • double treble crochet
 dtr2tog • work 2 dtr together
 ea • each

fl/flo • front loop only (insert hook under front loop only)
 foll • following
 FPdc • front post double crochet
 gp(s) or gr(s) • group(s)
 hk • hook
 hdc • half double crochet
 hdc2tog • work 2 hdc together
 inc • increase
 in • inch(es)
 lp(s) • loop(s)
 nc • not closed
 mm • millimeter(s)
 patt • pattern
 pm • place marker
 prev • previous
 rem • remaining

rep • repeat
 rnd • round
 RS • right side
 sc • single crochet
 sc2tog • work 2 sc together
 sk • skip
 sl st • slip stitch
 sp(s) • space(s)
 st(s) • stitch(es)
 t-ch(s) • turning chain(s)
 tog • together
 tr • treble
 tr2tog • work 2 tr together
 WS • wrong side
 yo/yoh • yarn over hook

WORKING PATTERNS...

Turn a row

At the end of a row, when you turn the work to begin the next row, you need to complete a turning chain (t-ch) to get to the right height of the stitch you're working, as demonstrated on the dc. This chain counts as the first stitch in the row and each technique, depending on its height, uses a different number of chains at the start of the row.

sc = 1 t-ch hdc = 2 t-ch dc = 3 t-ch

Measuring gauge

Before starting on a project, it's advisable that you do a gauge swatch to ensure that you're crocheting at the right tension. This enables you to correct any deviances from the working pattern before you begin, ensuring your project is the correct size. The swatch should be just over 4" (10cm) square. If the tension is wrong, you must re-work the swatch with larger or smaller hooks until you obtain the correct gauge. Measure out 4" (10cm) along a row and place markers. Measure out 4" (10cm) down the rows and place markers. Use these two sets of markers to count how many stitches and rows there are to 4" (10cm), and compare to the pattern's gauge swatch. You may wish to take a few measurements in this way to create an average. Before starting a project, do a tension swatch.

CHARTS KEY

Slip stitch	•
Slip stitch - back loop	◐
Chain	○
Single crochet	+
Half double crochet	┆
Double crochet	┆┆
Treble crochet	┆┆┆
Double treble crochet	┆┆┆┆
Worked in front loop	┆
Worked in back loop	┆



Slip stitch (sl st)

Slip stitch is used to join one stitch to another or to join a stitch to another point. It's usually made by picking up two strands of a stitch.

Insert the hook into the back loop of the next stitch and pass yarn over hook, as in chain stitch. Then draw yarn through both loops on stitch and repeat to end.

GETTING STARTED...

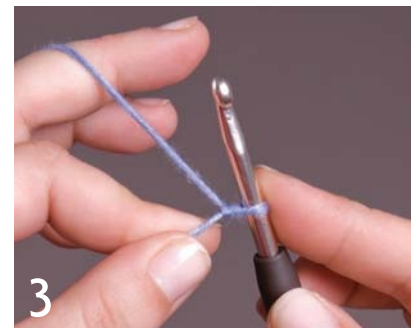
The slip knot



Step 1: Make a loop in the yarn.



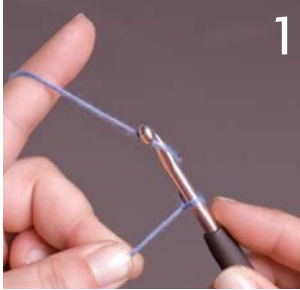
Step 2: With your crochet hook, catch the ball working end of the yarn and draw through loop.



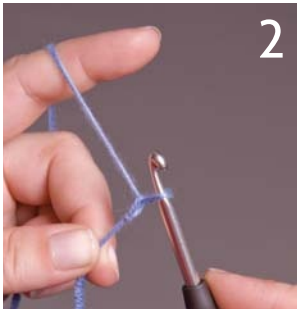
Step 3: Pull firmly on yarn and hook to tighten knot and create first loop.



Making a chain



Step 1: To make a chain, hold the tail end of the yarn and bring the yarn over the hook by passing the hook in front of the yarn, under and around it.



Step 2: Keeping the yarn taut, draw the hook and yarn through the loop on the hook. Pull it through.



Step 3: Ensuring the stitches are fairly loose, repeat to make the number of chains required.

To count the stitches, use the right side of the chain, or the one that has more visible and less twisted "V" shapes. Each "V" is one chain. Remember to count the slip knot as the first stitch, but do not count the loop on the hook.

Single crochet (sc): The most basic crochet stitch



Step 1: Skip 2 ch and insert hook, front to back into next stitch, under top loop of next ch. Yarn over hook (yo).

Step 2: Pull loop through to front, two loops on hook.

Step 3: Yo.

Step 4: Draw through both loops to complete the single crochet.

Step 5: Work one sc into every ch to end. For next row, turn your work and chain 1, called a turning chain. Skip stitch at the base of the turning chain, then work a sc under both top loops of next st. When working any stitch in crochet, you must work through both loops of each stitch, unless the pattern calls for just working through either the front or back loop of next stitch. Work one sc into each stitch to end of row. Repeat this row for sc fabric (shown at right).



Half Double crochet (hdc): The second essential crochet stitch



Step 1: Yo, insert hook in next stitch, from front to back, and pull the loop through just the chain stitch.



Step 2: This creates three loops on the hook.



Steps 3 and 4: Yo, as for dc, but draw yarn through three remaining loops on hook together to complete half double. Repeat the hdc along the row for hdc fabric.

Double crochet (dc): A taller crochet stitch



Step 1: Yo.



Step 2: Insert hook in next stitch, from front to back. Yo and pull the loop through just the chain stitch.



Step 3: Three loops on hook.



Step 4: Yo and draw the loop through the first two loops only.



Step 5: Two loops on hook.



Step 6: Yo.



Step 7: Draw through remaining two loops to complete double crochet. Repeat this along the row for dc fabric.

♥ RESOURCES ♥

Love the yarns in this issue? Ask your local yarn shop or check here for resources.

STYLISH GARMENTS

Cabled Crewneck Sweater
Cascade Yarns
www.CascadeYarn.com

Floral Motif Kimono Top
Miss Babs Hand Dyed Yarn & Fiber
www.MissBabs.com

Lacy Shawl Collar Sweater
Berroco
www.Berroco.com

Mosaic Jacket
Berroco
www.Berroco.com

ACCESSORIES & FUN STUFF

Autumn Leaves Scarf
Lion Brand Yarn
www.LionBrand.com

Beginner Bullion Scarf
Universal Yarn
www.UniversalYarn.com

Beginner Cabled Set
HiKoo
www.SkacelKnitting.com

Camilla Lace Shawl
Green Mountain Spinnery
www.Spinnery.com

Five-piece Mitered Shawl
Blackberry Ridge Woolen Mill
www.BlackberryRidge.com

Gemstone Tote
Berroco
www.Berroco.com

Hexagon Motif Scarf
Cascade Yarns
www.CascadeYarn.com

Lace Panel Infinity Scarf
Universal Yarn
www.UniversalYarn.com

Lacy Beaded Cowl
Interlacements Yarns
www.InterlacementsYarns.com

Modern Striped Cowl
Tahki Stacy Charles
www.TahkiStacyCharles.com

Simple Lace Edge Shawlette
Bijou Basin Ranch
www.BijouBasinRanch.com

Subtle Chevron Cowl
Lorna's Laces
www.LornasLaces.net

Super Cute Messenger Bag
Cascade Yarns
www.CascadeYarn.com

Tri-color Bulky Cowl
Rowan
www.KnitRowan.com

HOME DEC

Fall Swatch-cloth
Berroco
www.Berroco.com

Stadium Blanket
Cascade Yarns
www.CascadeYarn.com

KIDS' PROJECTS

Roly Poly Hedgehog
Berroco
www.Berroco.com

Teddy
Red Heart
www.RedHeart.com

WEB BONUS

Feathered Friends
Red Heart
www.RedHeart.com



Too many great patterns to fit in print!

LOOK FOR
THESE SIMILAR
patterns
CROCHETANDKNITSHOP.COM



FEATHERED FRIENDS FEEDER

Dana Bincer of Yarnovations.com
Yarn used: Super Saver, Baby Sheen, and Soft Yarn by Red Heart

For the complete pattern, please visit us online at www.LoveofCrochet.com.



bit.ly/Garden-Buddies



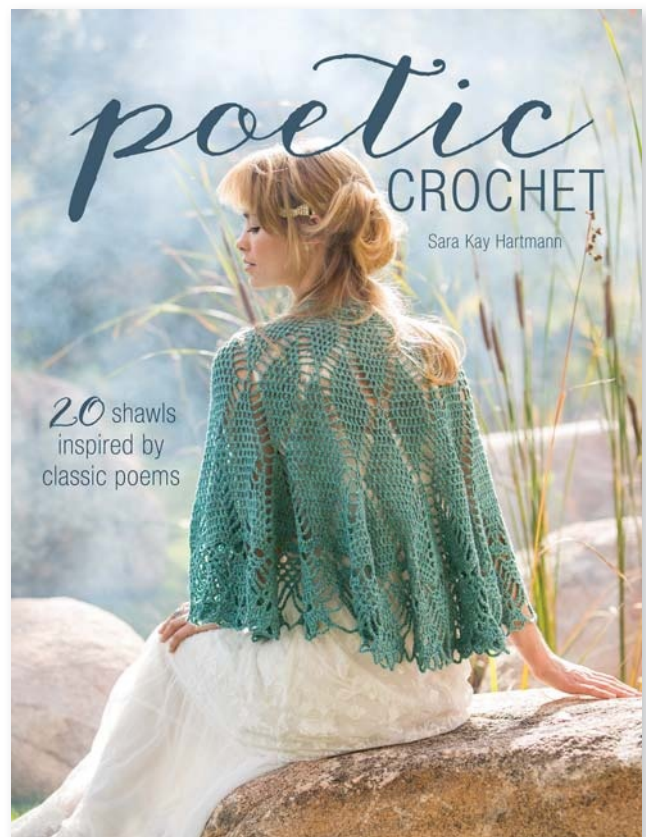
bit.ly/Four-Calling-Birds



bit.ly/Toad-Stool-Birdhouse

Crocheted shawls inspired by *classic poetry!*

Just as poetry laces together the simplest of words into dramatic lyrical pieces, *Poetic Crochet* uses basic stitches to create a romantic, breathtaking collection of shawls and wraps. The patterns in *Poetic Crochet* won't require any special technique knowledge, but rather they have been designed to highlight the simple sophistication achievable with the most basic of stitches. Crocheters with any experience level, beginner to advanced, will find something rewarding—and poetic—in this inspired collection of 20 projects.



ISBN 978-1-63250-006-9
136 pages | \$24.99 US/\$27.99 CAN
InterweaveStore.com

 **INTERWEAVE.**
interweave.com





LOVE DARING DESIGNS

LoveCrochet.com
1-866-677-0057



Yarn, Hooks, Buttons, Books and Thousands of Patterns

Introducing LoveCrochet: the world's first dedicated community for crocheters.
Visit promo.lovecrochet.com/LOCFALL15 for **10 FREE** crochet patterns!

Pattern: Simply Crochet by Debbie Bliss